

Neptune 3 Pro/ Plus/Max ADXL345 Mount Bracket (Remix, WIP)



georgmieraau

[VIEW IN BROWSER](#)

updated 29. 6. 2023 | published 29. 6. 2023

Summary

This version utilizes only M3 bolts/nuts

[3D Printers](#) > [3D Printers - Upgrades](#)

Tags: [adxl345mount](#) [elegooneptune3pro](#) [neptune3plus](#) [elegoo](#)
[neptune3pro](#) [neptune3max](#) [adxl345](#)

I had no M2 bolts/nuts on hand, so I made a version which utilizes only M3 bolts/nuts. You will need:

- 2 x M3x20 bolts
- 2 x M3x6 bolts
- 2 x M3 nuts

Printed with 100% infill.

I tested it on my Neptune 3 Pro, but since Plus and Max share the same toolhead, it should work on these models as well.

WIP: Threaded inserts version is in the making.

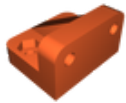
This remix is based on



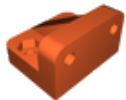
Neptune 3 Pro ADXL345 Mount Bracket

by Danila Dergachev

Model files



adxl345_bracket.3mf



adxl345_bracket.stl

License

This work is licensed under a
[Creative Commons \(4.0 International License\)](https://creativecommons.org/licenses/by-nc-sa/4.0/)



Attribution—Noncommercial—Share Alike

-
- ✗ | Sharing without ATTRIBUTION
 - ✓ | Remix Culture allowed
 - ✗ | Commercial Use
 - ✗ | Free Cultural Works
 - ✗ | Meets Open Definition