



Xiaomi Vacuum Mop P side brush mount



Andrew Ushakov

[VIEW IN BROWSER](#)

updated 12. 9. 2023 | published 12. 9. 2023

Summary

A replacement of the side brush for Xiaomi Vacuum Mop P or similar

[Household](#) > [Other House Equipment](#)

Tags: [brush](#) [repair](#) [xiaomi](#) [vacuumrobot](#)

Update 12.09.2023:

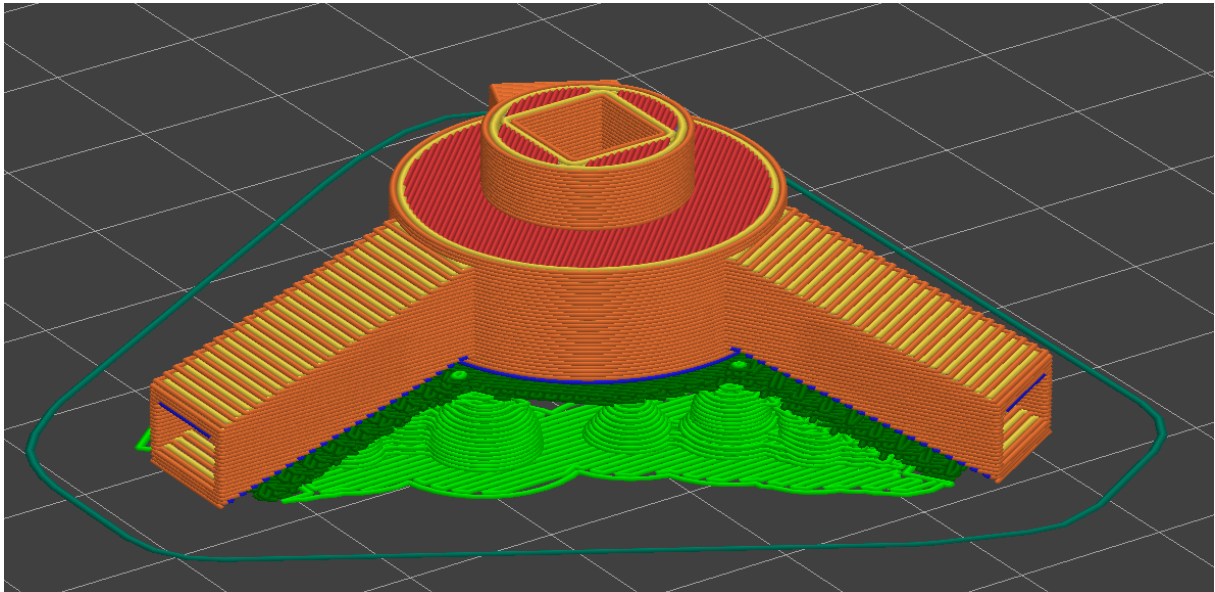
- Slightly changed form of the holes for the brush.
- Slightly increased thickness of the walls to increase rigidity and avoid break during brushes inserting.

The brush may be compatible with some other vacuum models. The dimensions of a brush fixation pin are 6x6mm. Overall brush radius is about 75mm.

After my original side brush of my Xiaomi Vacuum Mop p was broken, I ordered the new ones. However, new brush was too flexible so it ended up with vacuum cleaner always bending it under itself and losing it. So I designed a new brush base which worked great for me even on carpets.

Printing:

It is better to orient the model with the hole on top since less supports are needed.



30% gyroid infill should be more than enough for this model. **Do not use PLA or other fragile material.** I recommend using PETG.

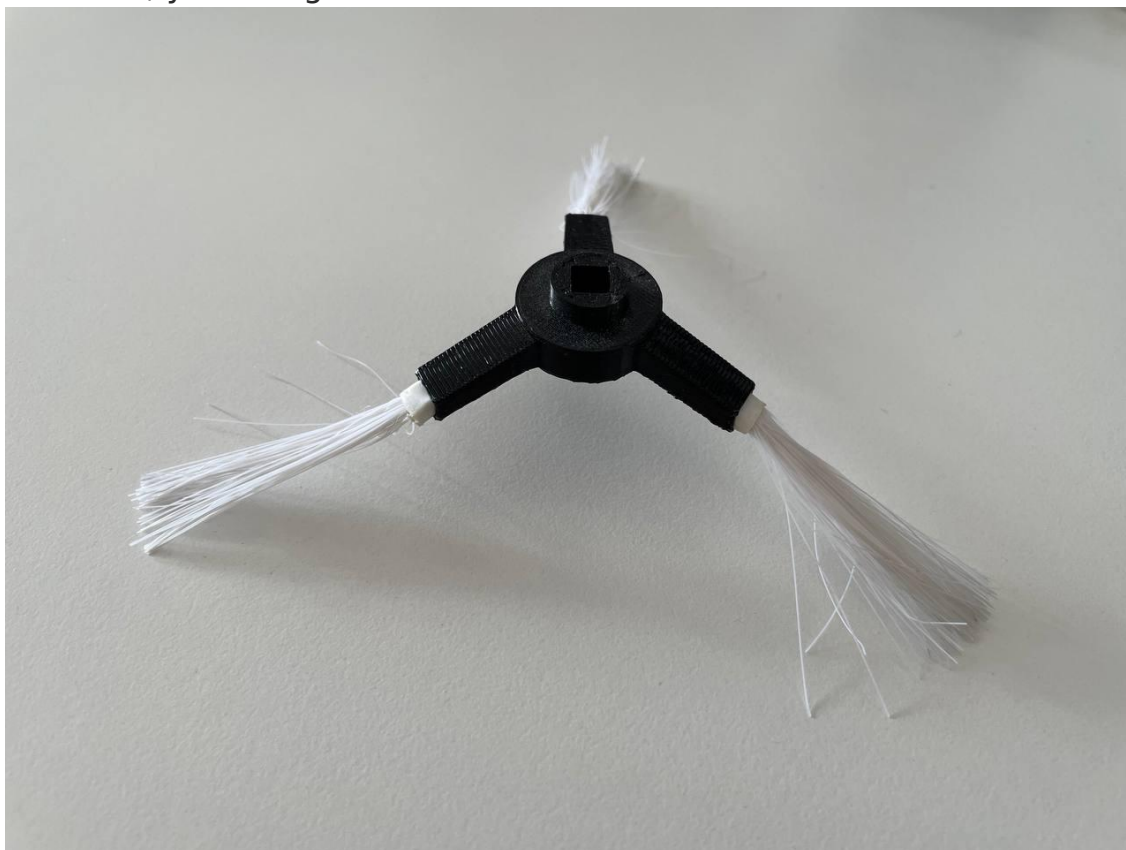
Assembly:

1. Cut off the bristles on a thin silicon stripe with around 1mm gap off the thick part. (see the photo below)



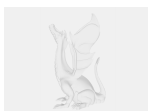
2. Insert these bristles into the new base's holes. You may need pliers to push bristles inside. The friction should be enough to hold them tight.

However, you can glue them if needed.



3. Insert the new brush on the vacuum's fixation pin.

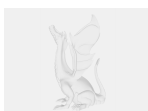
Model files



vacuummoppbrushmount_v11.step



vacuummoppbrushmount_v11.stl



vacuummoppbrushmount_v10.step



vacuummoppbrushmount_v10.stl

License

This work is licensed under a
Creative Commons (4.0 International License)



Attribution

- ✗ | Sharing without ATTRIBUTION
- ✓ | Remix Culture allowed
- ✓ | Commercial Use
- ✓ | Free Cultural Works
- ✓ | Meets Open Definition