



Snap Fit Case for Feather RP2040 DVI



[VIEW IN BROWSER](#)

updated 29. 6. 2023 | published 29. 6. 2023

Summary

Snap fit case for Feather RP2040 DVI

[Gadgets](#) > [Photo & Video](#)

Tags: [rp2040](#) [arduino](#) [fusion360](#) [raspberrypi](#) [hdmi](#)
[adafruit](#) [snapfit](#)

You can display graphics and images to an external monitor with the Feather RP2040 DVI. This Feather RP2040 has all the goodies you know and love plus digital video output that will work with any HDMI monitor or display. It features the RP2040 chip with a DVI/HDMI port, 8 megabytes of SPI flash, STEMMA QT, on-board NeoPixel and USB-C.

Feather DVI Guide

<https://learn.adafruit.com/adafruit-feather-rp2040-dvi>

Feather DVI Case Guide

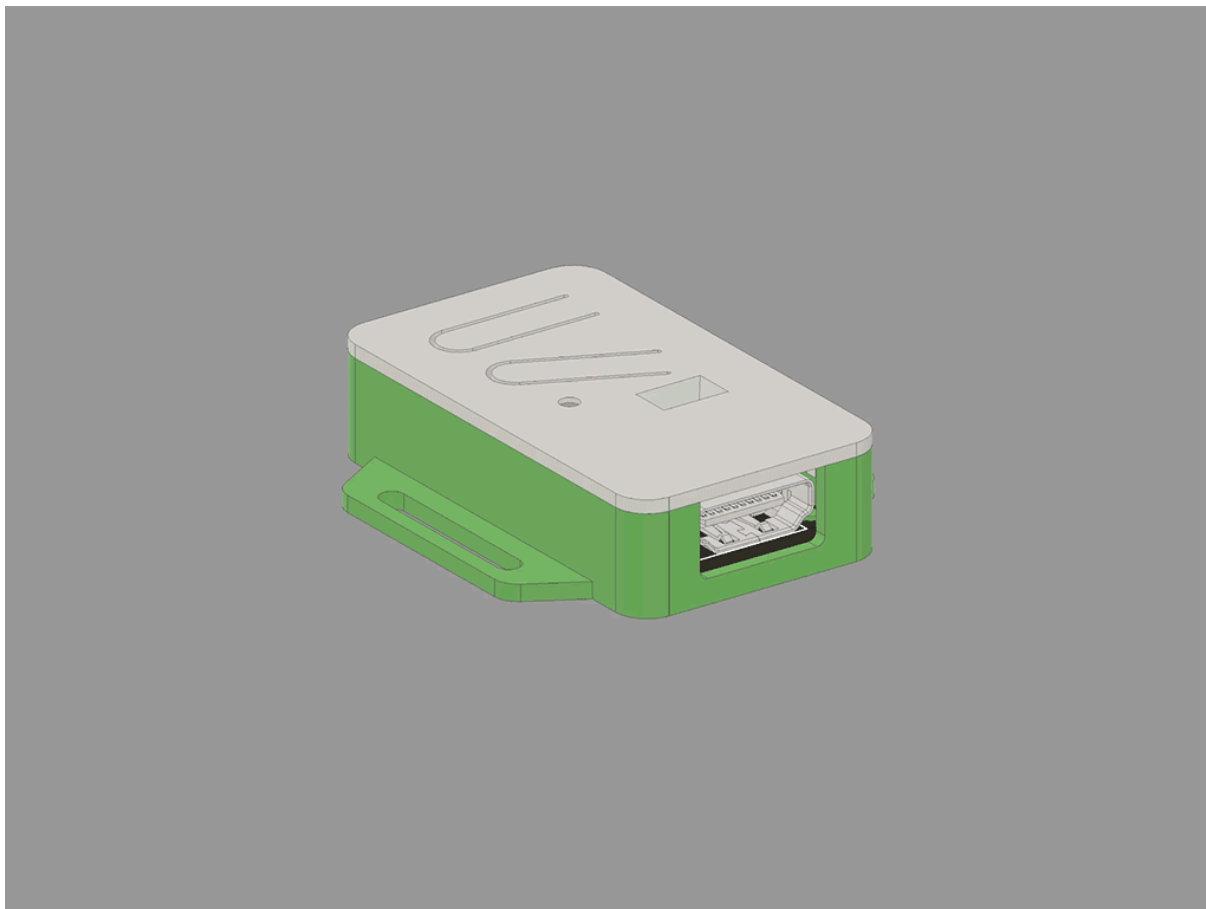
<https://learn.adafruit.com/case-for-feather-rp2040-dvi/>

Feather RP2040 DVI

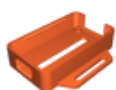
<https://www.adafruit.com/product/5710>

PicoDVI Library for Arduino Guide

<https://learn.adafruit.com/picodvi-arduino-library-video-out-for-rp2040-boards>



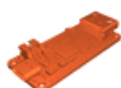
Model files



fdvi-case.stl



fdvi-top.stl



5710-feather-rp2040-dvi.stl



feather-dvi-case.f3z



feather-dvi-case.step



5710-feather-rp2040-dvi.f3d



5710-feather-rp2040-dvi.step

License

This work is licensed under a
Creative Commons (4.0 International License)



Attribution-ShareAlike

- ✗ | Sharing without ATTRIBUTION
- ✓ | Remix Culture allowed
- ✓ | Commercial Use
- ✓ | Free Cultural Works
- ✓ | Meets Open Definition