

MinV2 Ender 3 fan mount



jamie xu

[VIEW IN BROWSER](#)

updated 29. 6. 2023 | published 29. 6. 2023

Summary

A fan mount that is very quick and easy to print and directs the air more effectively towards the nozzle.

[3D Printers](#) > [3D Printers - Upgrades](#)

Tags: ender3

credits go to the original author

A fan mount that is very quick and easy to print and directs the air more effectively towards the nozzle.

features

- bltouch mount
- EZABL mount
- no support needed
- 2.5 hours print time
- better part cooling
- only stock parts

why design another ender 3 fan mount?

Other available coolers require additional hardware, take a long time to print, need support and require post-processing. I wanted something that was quick and easy to print but still had great cooling performance. I designed my cooler to print in 2.5 hours at 0.2mm layerheight without the need for any support. The cooling performance is great, I achieved 70 degree overhangs without loss in quality with the stock blower fan.

print instructions

designed for 0.4 mm nozzle, other nozzle sizes will probably not work as intended.

The complete mount can be printed in three pieces without any support. No brims needed.

Print the duct with wall line count 1 and extra skin wall count 0. This is necessary for the print to complete as intended during desing.

I printed in PLA and it's fine temperature-wise.

Total print time is aprox. 2.5 hours.

installation instructions

- Slightly loosen the hotend and pass the back plate behind it. Re-tighten the hotend.
- Bolt the hotend cooler to the frame together with the backplate.
- Slide the fan duct on and **gently** click it into place. Do not press from the bottom of the fan duct as that might break it.
- optional- install bltouch or induction probe, the offsets are in the images.

modding

I included the fusion360 archive so you can easily remix for your particular goals.

This remix is based on



MinV2 Ender 3 fan mount - re-upload

by ThijsOudeVrielink

Model files



fan_mount_back_plate.stl



fan_duct.stl



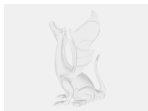
fan_mount_bltouch.stl



fan_mount_induction.stl



fan_mount_vanilla.stl



ender_3_fan_mount_2_v65.f3z

License ©

This work is licensed under a
[Creative Commons \(4.0 International License\)](#)



Attribution

- ✗ | Sharing without ATTRIBUTION
- ✓ | Remix Culture allowed
- ✓ | Commercial Use
- ✓ | Free Cultural Works
- ✓ | Meets Open Definition

