

Safety 1st Easy Install High Walk Thru Gate Pet Door

 **hellgiver**

[VIEW IN BROWSER](#)

updated 29. 6. 2023 | published 29. 6. 2023

Summary

Guards that allow you to cut off a section of a bar in your safety gate to make a pet door.

[Household](#) > [Pets](#)

Tags: [babyprotection](#) [babyproofing](#) [petdoor](#) [babyproof](#)
[safetygate](#)

Designed to perfectly fit the [Safety 1st Easy Install 28" High Walk Thru Gate](#) but I attached the Fusion 360 files so you can modify it to fit other gates. It features [hostile architecture](#) studs to discourage kids from trying to use the top piece as a step.

WARNING:

Cutting your gate like this makes it less baby proof as the bars as wide apart enough for a child's head to get stuck. **I am also not responsible in any way if you modify your gate.**

Instructions:

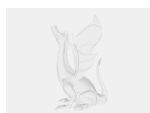
1. Cut the center bar of your gate at the bottom (use a sawzall, dremel, etc.)
 1. See attached photo

2. Cut the same bar at an appropriate height for your animal, I chose around 8 inches for an old cat
 1. You can find pet door guides online that explain how to measure your animal's shoulder height
3. Clean up the cuts with a file so there are no sharp edges (in case your kid pulls the printed parts off)
4. Print the parts.
 1. Make sure the hostile architecture studs are not sharp, use sandpaper if necessary. We want them to be painful like stepping on a Lego but not cut.
5. The bottom part just slides right down, you may need to adjust your walls to make the friction fit tighter or looser depending on your gate (manufacturing tolerances can differ)
6. The top part installs easiest if you remove the gate and turn it upside down, then insert the part in between the bars at a diagonal and rotate into position, then press fit into place. Similar to the bottom part, you may need to adjust the center hole size to friction fit to your bar. This fit should be TIGHT both onto the center bar and between the side bars to give it as much strength as possible in case a kid stands on it.

Printing Instructions:

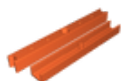
1. Print using a strong plastic like PETG, ABS, etc. I did not try PLA.
2. Use at least 50% infill using an infill pattern better than grid (I used 3D honeycomb)
 1. This **should** help prevent the top piece from breaking if your kid tries to use it as a step

Model files

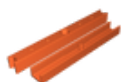


safety-gate-animal-door-guards-v5.f3d

 Fusion 360 file



safety-gate-animal-door-guards-v5.3mf



safety-gate-animal-door-guards-v5.stl

License

This work is licensed under a
Creative Commons (4.0 International License)



Attribution-NonCommercial

- ✗ | Sharing without ATTRIBUTION
- ✓ | Remix Culture allowed
- ✗ | Commercial Use
- ✗ | Free Cultural Works
- ✗ | Meets Open Definition