

NS 20 "KAMEEL" - directie/ inspectiewagen - Spoor 1 (1:32)



Beusekomse Baan

[VIEW IN BROWSER](#)

updated 5. 9. 2023 | published 5. 9. 2023

Summary

NS 20 "KAMEEL" - directie/inspectiewagen - Spoor 1 (1:32)

[Toys & Games](#) > [Vehicles](#)

This is my interpretation in Gauge 1 (1:32) of the inspection car build by Allan in Rotterdam for the "Nederlandse Spoorwegen" in 1954.

[https://nl.wikipedia.org/wiki/Kameel_\(spoorwegmaterieel\)](https://nl.wikipedia.org/wiki/Kameel_(spoorwegmaterieel))

Due to the two domes on the roof, the nickname "Camel" was well deserved.

The initial deployments were to transport the direction to inspections.

Later in her career she could be rented as a VIP-car. Unfortunately the blue livery was changed to the yellow/grey house style standard colours.

Since a complete restauration in 2019 this special wagon is still certified to operate on the Dutch railway network. It is preserved in the collection of "Het Nederlands Spoorwegmuseum". <https://www.spoorwegmuseum.nl/...e/onze-treinen/de-kameel/>

Parts needed:

Axles: 4 X Standard LGB wheel/axle-sets (3.0 mm metal rod, 30 mm wheels)

Bearings: 8 X MR63ZZ

Motors: 2 X Geared motor 16GA-050 (i.e. 12V/1400 rpm)

RC Receiver: Your personal preference

ESC: 6V ESC for brushed motors (AliExpres, eBay, BangGood, etc.....)

Power supply: I've used one 18650 cell, a charging/undervoltage PCB and a boost converter to achieve 6V DC.

Additional: LED's (red, white and red/white) for the interior and the front and rear signal lights. Sound module. Several standing and sitting 1:32 figures.

Screws: Several sizes, M2, M3 and M5

Paint

Plastic sheet for the windows.

06SEP2023: After printing my initial files I've observed and encountered several issues that required modifications. These corrected files, resulting in the model captured in the youtube video, are now uploaded.

Good luck printing the "KAMEEL".

Model files



kameel-dak-stuurstand-2x.3mf



kameel-dak-kop-1.3mf



kameel-dak-midden-1-1x.3mf



kameel-dak-midden-2-1x.3mf



kameel-dak-kop-2.3mf



kameel-kop-1.3mf



kameel-wand-1-1x.3mf



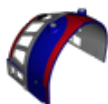
kameel-wand-2-1x.3mf



kameel-wand-3-1x.3mf



kameel-wand-4-1x.3mf



kameel-kop-2.3mf



kameel-montagebeugel-kop-4x.3mf



kameel-montagebeugel-midden-2x.3mf



kameel-vloer-kop-1-1x.3mf



kameel-vloer-midden-1-1x.3mf



kameel-vloer-midden-2-1x.3mf



kameel-vloer-kop-2-2x.3mf



kameel-bodem-kop-1-1x.3mf



kameel-bodem-midden-1x.3mf



kameel-bodem-kop-2-1x.3mf



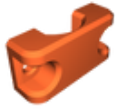
kameel-zijkant-wielstel-4x.3mf



kameel-tandwiel-wielset-2x.3mf



kameel-tandwiel-motor-2x.3mf



kameel-houder-motor-2x.3mf



kameel-midden-wielstel-2x.3mf



kameel-binnenwanden-1-1x.3mf



kameel-binnenwanden-2-1x.3mf



kameel-stoel-machinist-2x.3mf



kameel-bank-salon-1x.3mf



kameel-stoel-2x.3mf



kameel-desk-conducteur-1x.3mf



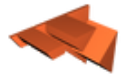
kameel-bank-directie-1x.3mf



kameel-wastafel-conducteur-1x.3mf



kameel-bank-conducteur-1x.3mf



kameel-bureau-salon-1x.3mf



kameel-tafeltje-directie-1x.3mf



kameel-gasfornuis-1x.3mf



kameel-aanrecht-1x.3mf



kameel-vergadertafel-met-bank-2x.3mf

License ©

This work is licensed under a
Creative Commons (4.0 International License)



Attribution—Noncommercial—Share Alike

- ✗ | Sharing without ATTRIBUTION
- ✓ | Remix Culture allowed
- ✗ | Commercial Use
- ✗ | Free Cultural Works
- ✗ | Meets Open Definition

