

Gear fidget + Tolerance test



Emil Haase

[VIEW IN BROWSER](#)

updated 29. 6. 2023 | published 29. 6. 2023

Summary

Test your printer and bonus, you will have a gear fidget.



1.15 hrs



1 pcs



0.25 mm



0.40 mm



PLA



15 g



Prusa MINI /
MINI+

[3D Printers](#) > [Test Models](#)

Tags: [prusamini](#) [tolerance](#) [tolerances](#) [testprint](#) [fidget](#)
[toys](#) [test](#) [onshape](#) [tolerancecheck](#) [fidgettoy](#) [gears](#)
[toy](#) [mm](#) [tolerancetest](#) [gear](#) [inplace](#) [assembled](#) [pip](#)
[printinplace](#)

This is a Gear fidget with a tolerance test. You can print the tolerance your printer can handle. So you can test your printer and have a fidget and not just a part on your table.

Model files



gear-fidget-050mm.step

☐ You should be able to print this. Tolerance is big.



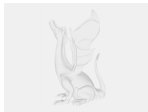
gear-fidget-045mm.step

☐ You should be able to print this. Tolerance is big.



gear-fidget-040mm.step

☐ You should be able to print this. Tolerance is big.



gear-fidget-035mm.step

☐ You should be able to print this. (RECOMMENDED FOR BEST FIDGET)



gear-fidget-030mm.step

☐ You should be able to print this.



gear-fidget-025mm.step

☐ You should be able to print this.



gear-fidget-020mm.step

☐ You should be able to print this. Little harder to print.



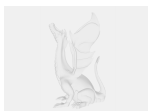
gear-fidget-015mm.step

☐ You should be able to print this. Little harder to print.



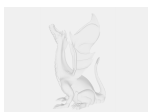
gear-fidget-010mm.step

☐ Impressive Well tuned printer.



gear-fidget-005mm.step

☐ IMPRESSIVE Well tuned printer.



gear-fidget-001mm.step

☐ IMPRESSIVE This is almost Impossible.



gear-fidget-000mm.step

IMPOSSIBLE

Print files



gear-fidget-0_025mm_pla_mini_1h9m.gcode

PLA 0.40 mm 0.25 mm 1.15 hrs 15 g Prusa MINI / MINI+

License

This work is licensed under a
[Creative Commons \(4.0 International License\)](#)



Attribution

-
- ✗ | Sharing without ATTRIBUTION
 - ✓ | Remix Culture allowed
 - ✓ | Commercial Use
 - ✓ | Free Cultural Works
 - ✓ | Meets Open Definition