



Bambu Lab - MAGNETIC Purge/ Flush/Poop bucket for X1, X1C and P1P - 5x5 mm magnet - 125mm deep



wolffman

[VIEW IN BROWSER](#)

updated 9. 7. 2023 | published 9. 7. 2023

Summary

A simple variation of the poop bucket 5 x5 magnet that is 125 mm deep at the back

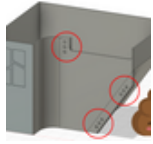
[3D Printers](#) > [3D Printers - Upgrades](#)

Tags: [bambulab](#) [bambux1carbon](#) [bambulabp1p](#) [poopbucket](#)

the 125mm depth makes the the X1C or P1P fit on an Ikea shelf of 52 cm deep.

use the standard setting of the original

This remix is based on



Bambu Lab - MAGNETIC Purge/Flush/Poop bucket for X1, X1C and P1P - Fullsize and Slim Version | UPDATE 2023.05.13

by Nivenante

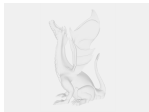
Model files



bambulab_bucket_magnets_d5x5mm-125-mm-deep.3mf



bambulab_bucket_magnets_d5x5mm-125-mm-deep.stl



bambulab_bucket_magnets_d5x5mm-125-mm-deep.skp

License ©

This work is licensed under a
[Creative Commons \(4.0 International License\)](#)



Attribution

- ✗ | Sharing without ATTRIBUTION
- ✓ | Remix Culture allowed
- ✓ | Commercial Use
- ✓ | Free Cultural Works
- ✓ | Meets Open Definition