

GT12 Club Race Hero Carbon Solid Axle

 **juanmedinar20**

[VIEW IN BROWSER](#)

updated 29. 6. 2023 | published 29. 6. 2023

Summary

Here is a solid carbon axle for the GT12 Club Race Hero.

[Hobby & Makers](#) > [RC & Robotics](#)

Tags: [racing](#) [rccar](#) [cars](#) [gt12](#)

Here is a solid carbon axle for the GT12 Club Race Hero. You will need a Ø1/4" carbon fiber tube. A 110mm long tube will give a 172mm track, you can cut it a little shorter. To secure the wheel to carbon tube you need a M3 nut and grub/set screw. I haven't tested the spur gear and pinion but they have a 64 pitch. I have used 3d printed gears with a 48 pitch and they work perfect with a 0.4mm nozzle. If you have issue and strip the these gears with a 0.4mm maybe try a 0.2mm nozzle.

On my car using the 3D printed side pods "search my profile" I ended up suing the 6mm. The axle is designed to use symmetrical bushings. The motor clamp is a model from Ken Ausplund and it should be printed out of a high temp material.

Model files



72t-spur.step



53t-pinion.step



bushing-05mm.step



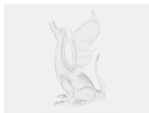
right-tire-axle.step



bushing-5mm.step



bushing-1mm.step



bushing-6mm.step



left-tire-axle.step



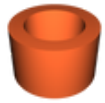
motor_clamp.stl



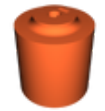
bushing-5mm.stl



bushing-1mm.stl



bushing-6mm.stl



left-tire-axlestep.stl



right-tire-axlestep.stl



bushing-05mm.stl



53t-pinion.step



72t-spur.step

License ©

This work is licensed under a
[Creative Commons \(4.0 International License\)](#)



Attribution-NonCommercial

- ✗ | Sharing without ATTRIBUTION
- ✓ | Remix Culture allowed
- ✗ | Commercial Use

- ✖ | Free Cultural Works
- ✖ | Meets Open Definition