



## Case for Bodum milk frother



Minus-designs

[VIEW IN BROWSER](#)

updated 29. 6. 2023 | published 29. 6. 2023

### Summary

Made this case for Bodum milk frother, it uses 4 magnets 5x3mm, the hinge uses a piece of filament

[Household](#) > [Kitchen](#)

Tags: [milk](#) [milkfrother](#) [frother](#) [enclosure](#) [case](#) [bodum](#)

The tabs on the main body can be pinched off, made for keeping the body to the buildplate.

The hinge uses a piece of filament.

The logo on the lid can be painted in the slicer.

3 Walls

4 bottom / 4 top layers

15% infill

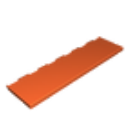
0,2mm layer height

Magnets:

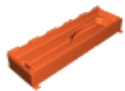
<https://www.aliexpress.com/item/1005001530040184.html?spm=a2g0o.productlist.main>

1.7c30fb0an4tE9F&algo\_pvid=9b6f8070-5e6a-4888-  
ac8f-0f25bdd3ba29&algo\_exp\_id=9b6f8070-5e6a-4888-  
ac8f-0f25bdd3ba29-0&pdp\_npi=3%40dis%21DKK%2127.51%2118.73%21%21%21%21

## Model files



**bodum-lid.stl**



**bodum-main.stl**

## License

This work is licensed under a  
[Creative Commons \(4.0 International License\)](#)



**Attribution—Noncommercial—Share Alike**

- 
- ✗ | Sharing without ATTRIBUTION
  - ✓ | Remix Culture allowed
  - ✗ | Commercial Use
  - ✗ | Free Cultural Works
  - ✗ | Meets Open Definition