



## ESPRESSIF ESP32 Board Project Case



cperuffo3

[VIEW IN BROWSER](#)

updated 29. 6. 2023 | published 29. 6. 2023

### Summary

A Compact case to house an Espressif ESP32 Board for any number of esphome or home assistant like projects

[Hobby & Makers](#) > [Electronics](#)

Tags: [project](#) [esp](#) [wled](#) [esp32](#) [enclosure](#) [wroom](#)  
[home](#) [espressif](#) [esphome](#) [assistant](#) [case](#) [homeassistant](#)  
[32d](#)

Use this case for a hardware-less case for any standalone Espressif ESP32 board. Lid is a good friction fit and micro-usb opening should allow basically any cable to be used.

Top grate allows good airflow and there is no detectable degradation of WiFi or Bluetooth signals through the case.

Let me know if there are any modifications you'd like or feel free to make them yourself with the attached Solidworks Maker Files!  
Happy Printing!

# Model files



## STEP Files

2 files



**newespcasetop.step**

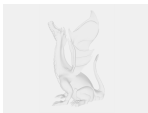


**newespcasebottom.step**



## Solidworks (Maker Marked) Native Files

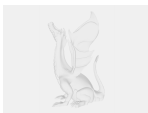
5 files



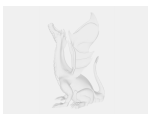
**newespcasetop.sldprt**



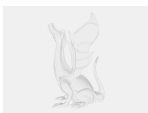
**newespcasebottom.sldprt**



**newespcase.sldasm**



**micro-usb-plug.sldprt**



**esp32\_ref.sldprt**

# License ©

This work is licensed under a  
**Creative Commons (4.0 International License)**



## Attribution

---

- ✗ | Sharing without ATTRIBUTION
- ✓ | Remix Culture allowed
- ✓ | Commercial Use
- ✓ | Free Cultural Works
- ✓ | Meets Open Definition