



Lord of the rings - Triptych style (Filament Painting)



Ian Smalley

[VIEW IN BROWSER](#)

updated 30. 8. 2023 | published 30. 8. 2023

Summary

Filament painted print made using HueForge - Filament swaps ONLY, no mmu/ams required

[Art & Design](#) > [2D Plates & Logos](#)

Tags: [multicolor](#) [filament](#) [art](#) [multicolour](#) [filamentswap](#)
[hueforge](#) [filamentpainting](#)

multi-Colour HueForge model. Lord of the rings - Triptych style filament painting made using Sunlu and Esun PLA+ colours.

Print at 0.08mm layer heights, 0.16mm first layer. 100% infill (Rectilinear)

LOR - The Green Tree

Filaments Used:

PLA Sunlu PLA+ Black Transmission Distance: 0.6

PLA Esun PLA+ Pine Green Transmission Distance: 2.5

PLA Sunlu PLA+ Grass Green Transmission Distance: 2.5

PLA Sunlu PLA Green Transmission Distance: 10

PLA Sunlu PLA+ White Transmission Distance: 7

Swap Instructions:

Black until layer #5 at 0.48mm

Pine Green until layer #6 at 0.56mm
Grass Green until layer #8 at 0.72mm
Green until layer #9 at 0.8mm
White for the rest.

LOR - The Blue Tower

Filaments Used:

PLA Sunlu PLA+ Black Transmission Distance: 0.6
PLA Esun PLA+ Dark Blue Transmission Distance: 2.5
PLA Sunlu PLA+ Blue Transmission Distance: 3.5
PLA Esun PLA+ Space Blue Transmission Distance: 3
PLA Sunlu PLA+ White Transmission Distance: 7

Swap Instructions:

Black until layer #5 at 0.48mm
Dark Blue until layer #7 at 0.64mm
Blue until layer #9 at 0.8mm
Space Blue until layer #12 at 1.04mm
White for the rest.

LOR - The Red Volcano

Filaments Used:

PLA Sunlu PLA+ Black Transmission Distance: 0.6
PLA Esun PLA+ Fire Engine Red Transmission Distance: 5
PLA Esun PLA+ Magenta Transmission Distance: 6
PLA Sunlu PLA+ Skin Transmission Distance: 7
PLA Sunlu PLA+ White Transmission Distance: 7

Swap Instructions:

Black until layer #5 at 0.48mm
Fire Engine Red until layer #6 at 0.56mm
Magenta until layer #7 at 0.64mm
Skin until layer #8 at 0.72mm
White for the rest.

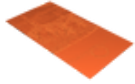
This is a filament blending model, avoid special filaments and stick with the plain ones for the best results. SUNLU filaments tend to be more transmissive and are a good choice.

Use the exact numbers in your slicer to match up properly.

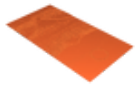
Model files



lor-the-green-tree_front_119x220.stl

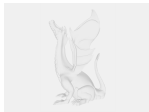


lor-the-blue-tower_front_119x220.stl



lor-the-red-volcano_front_120x221.stl

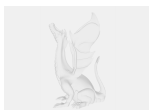
Other files



lor-the-green-tree_describe.txt



lor-the-blue-tower_describe.txt



lor-the-red-volcano_describe.txt

License

This work is licensed under a
[Creative Commons \(4.0 International License\)](https://creativecommons.org/licenses/by-nc/4.0/)



Attribution-NonCommercial

✗ | Sharing without ATTRIBUTION

- ✓ | Remix Culture allowed
- ✗ | Commercial Use
- ✗ | Free Cultural Works
- ✗ | Meets Open Definition