



## Allpe Watch Charger Cradle for Monitor Arm



**borisisagreatname**

[VIEW IN BROWSER](#)

updated 11. 1. 2021 | published 11. 1. 2021

### Summary

I like mounting things to my monitor arm so they don't take up desk space and are out of the way.

[Gadgets](#) > [Portable Devices](#)

Tags: [apple](#) [watch](#) [charge](#) [chargingcradle](#) [monitormount](#)

I like mounting things to my monitor arm so they don't take up desk space and are out of the way. This time it was the charger for my Apple watch. Since I'm now using the watch for sleep tracking I usually charge while at my and this way it's in my field of view but out of the way.

You'll need:

1x apple watch charger

2x M4 screws and nuts

1x M5 flat top screw

optional: M5 threaded insert

I made two versions of the "clamp". One for a threaded insert an the other one with a smaller hole so you can tap directly into the plastic.

### Print instructions

Everything prints easily without supports.

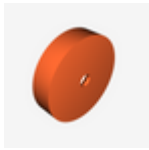
# Model files



**pipeclampm5selftapping.stl**



**pipeclampthreadedinsert.stl**



**chargercradle.stl**

## License ©

This work is licensed under a  
[Creative Commons \(4.0 International License\)](https://creativecommons.org/licenses/by/4.0/)



### Attribution

- 
- ✗ | Sharing without ATTRIBUTION
  - ✓ | Remix Culture allowed
  - ✓ | Commercial Use
  - ✓ | Free Cultural Works
  - ✓ | Meets Open Definition