



Coaster



Ethan Wu

[VIEW IN BROWSER](#)

updated 1. 7. 2023 | published 1. 7. 2023

Summary

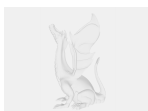
Printable Coaster

[Household](#) > [Other House Equipment](#)

Tags: [drinkcoaster](#) [coasters](#)

This coaster is inspired by a coaster I saw in Japan. This coaster will catch condensation when it forms. Printed in PLA. The one shown in the picture is the 75mm one, which I recommend. If you like higher walls on a coaster to prevent the cup from falling off, use the v2. If you like the walls to be lower, use v1.

Model files



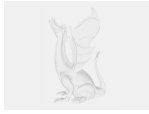
[v2_coaster_higher_walls_75_mm_diameter_-v1.step](#)



[v2_coaster_higher_walls_25_mm_diameter_-v1.step](#)



v2_coaster_higher_walls_50_mm_diameter_-v1.step



v2_coaster_higher_walls_100_mm_diameter.step



v1_coaster_lower_walls_100_mm_diameter.step

License ©

This work is licensed under a
Creative Commons (4.0 International License)



Attribution—Noncommercial—Share Alike

- ✗ | Sharing without ATTRIBUTION
- ✓ | Remix Culture allowed
- ✗ | Commercial Use
- ✗ | Free Cultural Works
- ✗ | Meets Open Definition