



## 5015 fan mount for BIQU H2 on Sapphire Pro/Plus (SP-5)

 wookiearocket

[VIEW IN BROWSER](#)

updated 17. 2. 2024 | published 17. 2. 2024

### Summary

improved geometry fan duct/mount for a 5015 blower to accompany an H2

[3D Printers](#) > [Other Printer Parts & Upgrades](#)

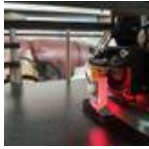
Tags: [5015fanduct](#) [coolingduct](#) [sp5](#) [sapphireplus](#) [twotrees](#)  
[sapphirepro](#) [biquh2](#) [twotreessapphireplus](#)

This fan duct is designed to print without supports as orientated in the .3mf.

This fan mount is intended to accompany the Biqu H2 bracket from here: <https://www.printables.com/model/175642-twotrees-sapphire-plus-sp-5-v11-modular-biqu-h2-ex> Using this fan mount and bracket combination does not require modification to the bed leadscrews as it maintains the position and z-height of the stock SP-5 hotend.

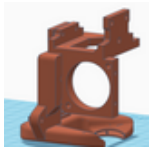
If also using a cable chain for the heatbed, this duct may collide with the cable chain while homing unless the cable chain does not extend above the plane of the heatbed

# This remix is based on



## Sapphire pro mount for BIQU H2 extruder mount

by marto



## Sapphire Pro/Plus (SP-5) BIQU H2 + 5015 fan mount smashup

by wookiearocket

# Model files



### h2\_fanduct\_1.3mf

original version of the model



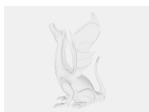
### h2\_fanduct\_1.stp

original version of the model



### h2\_fanduct-\_2.3mf

updated with slightly improved lightweighting



### h2\_fanduct\_2.stp

updated with slightly improved lightweighting

# License ©

This work is licensed under a  
**Creative Commons (4.0 International License)**



**Attribution-NonCommercial**

- ✗ | Sharing without ATTRIBUTION
- ✓ | Remix Culture allowed
- ✗ | Commercial Use
- ✗ | Free Cultural Works
- ✗ | Meets Open Definition