



Tessellating Tiles - witch



NovemberKou

[VIEW IN BROWSER](#)

updated 18. 7. 2023 | published 18. 7. 2023

Summary

Tessellating Tiles based on IH88 (IH: Isohedral Tilings)



3.67 hrs



4 pcs



0.30 mm



0.40 mm



PET



55 g



Prusa
MK3/S/S+

[Art & Design](#) > [2D Plates & Logos](#)

Tags: [tessellation](#)

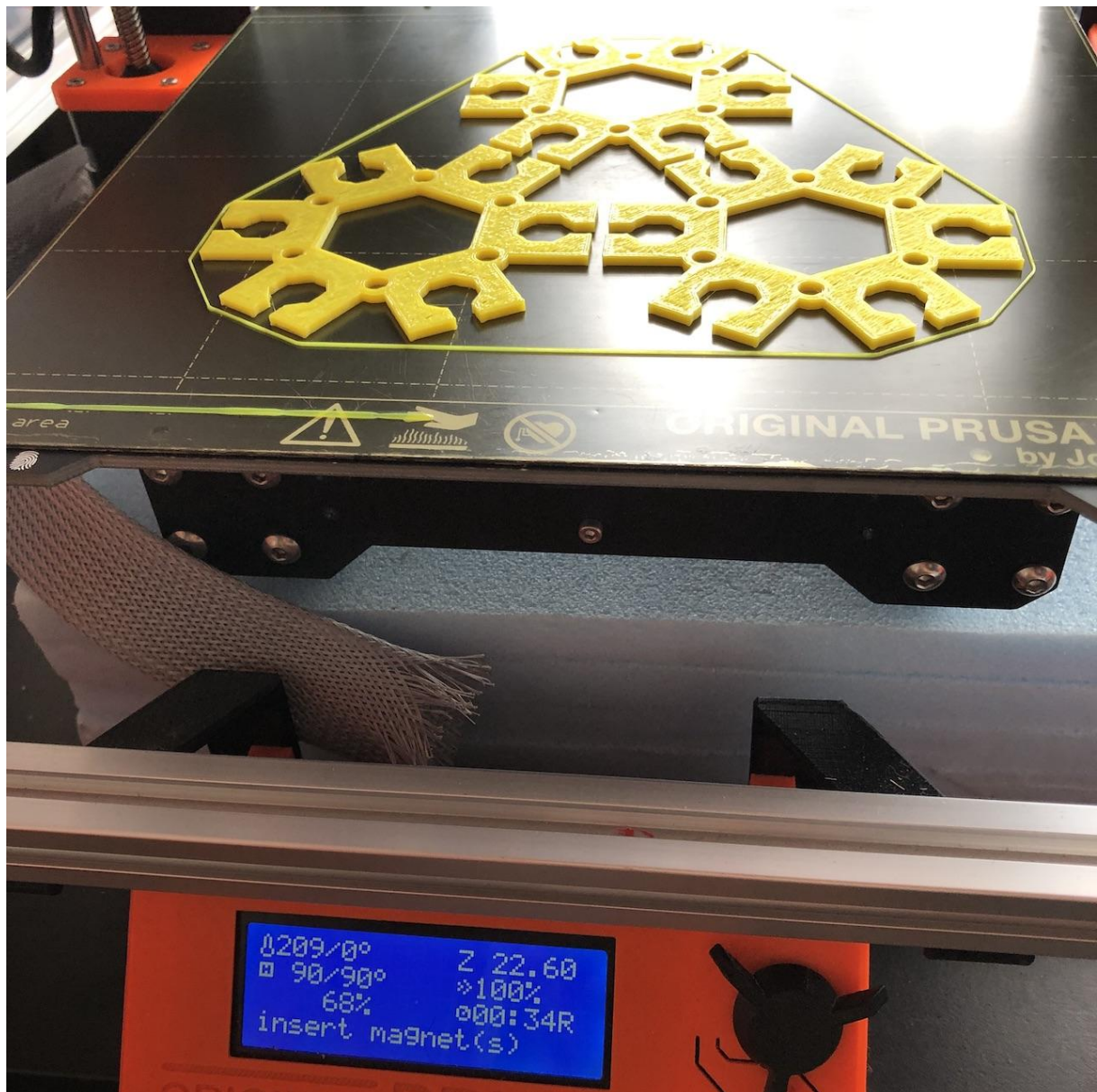
This is a tessellation tile that can fill a flat surface without gaps. The tiles have magnets built into them so they can be attached to flat metal surfaces. A base with a magnet is also available as an option.

It is intended to embed a magnet 5 mm in diameter and 2 mm thick.
5mm 2mm

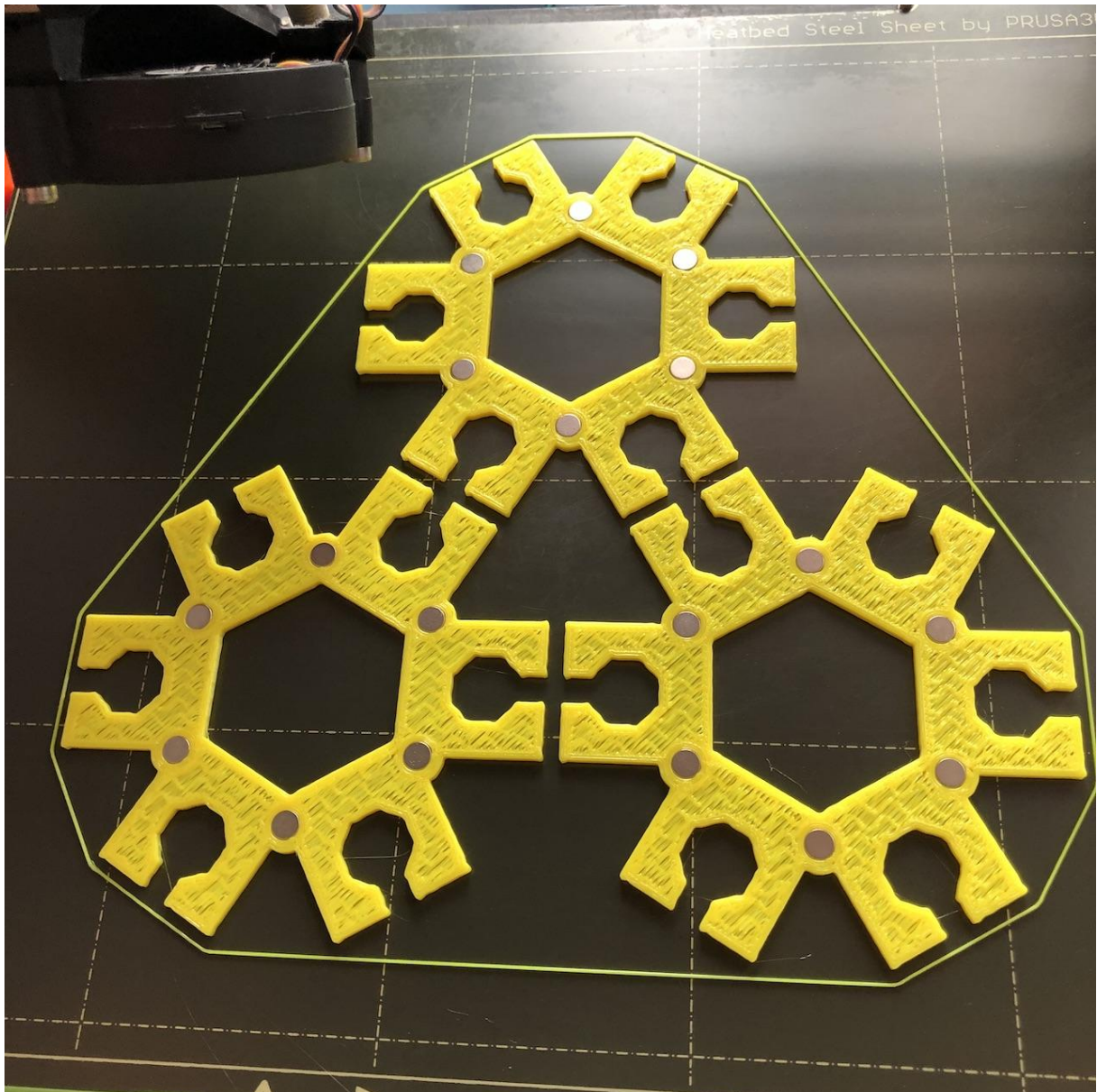
If you use the attached gcode file, it will pause in the middle of printing and display "insert magnet(s)".

gcode

insert magnet(s)



Insert magnets as shown in the following picture. Remember to align the polarity of the magnets.



The photo above is for the "base unit," but the process is the same for "witch" printing. However, in the case of "witch", a pause for color change is also added.

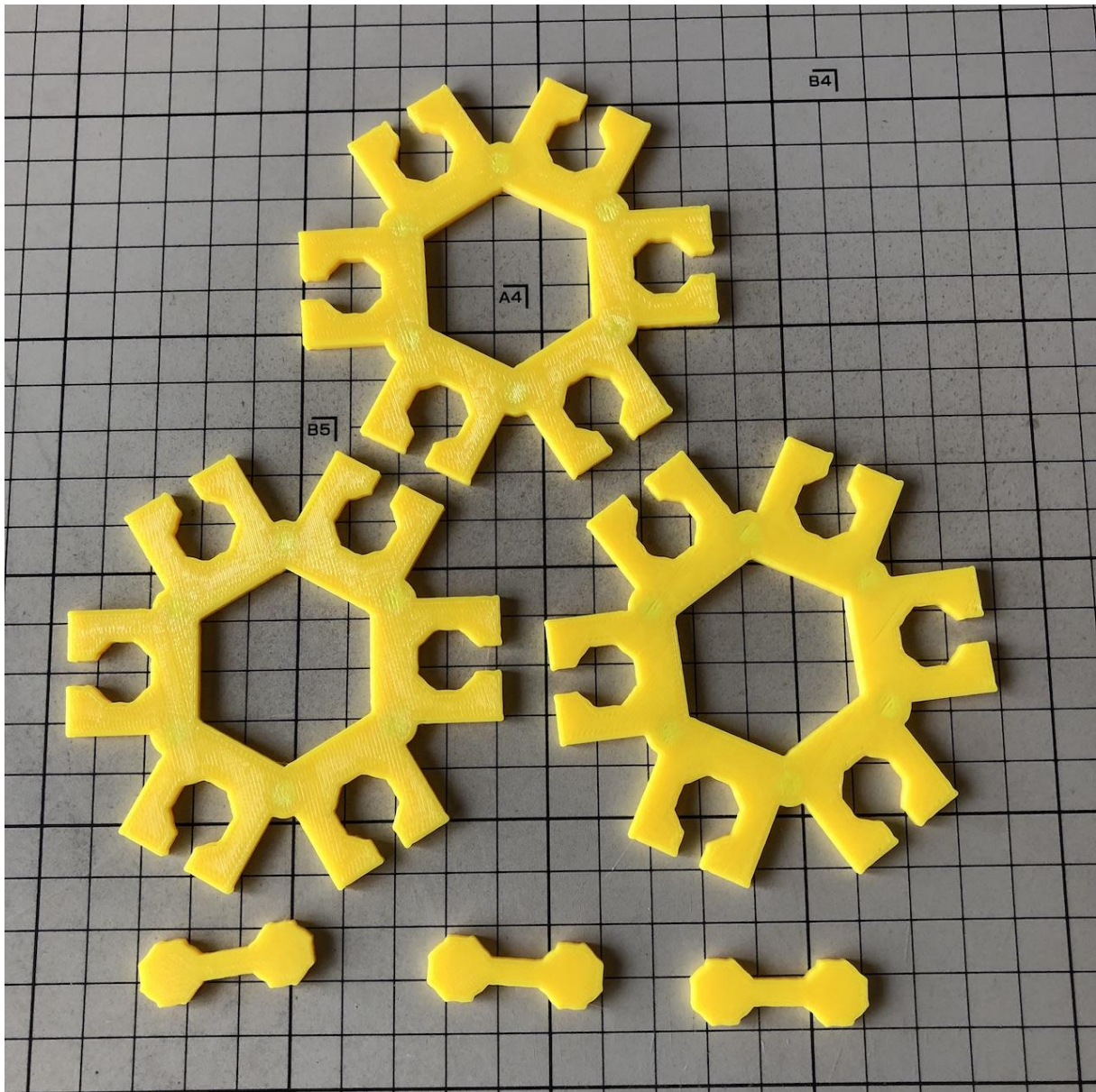
base unit

witch

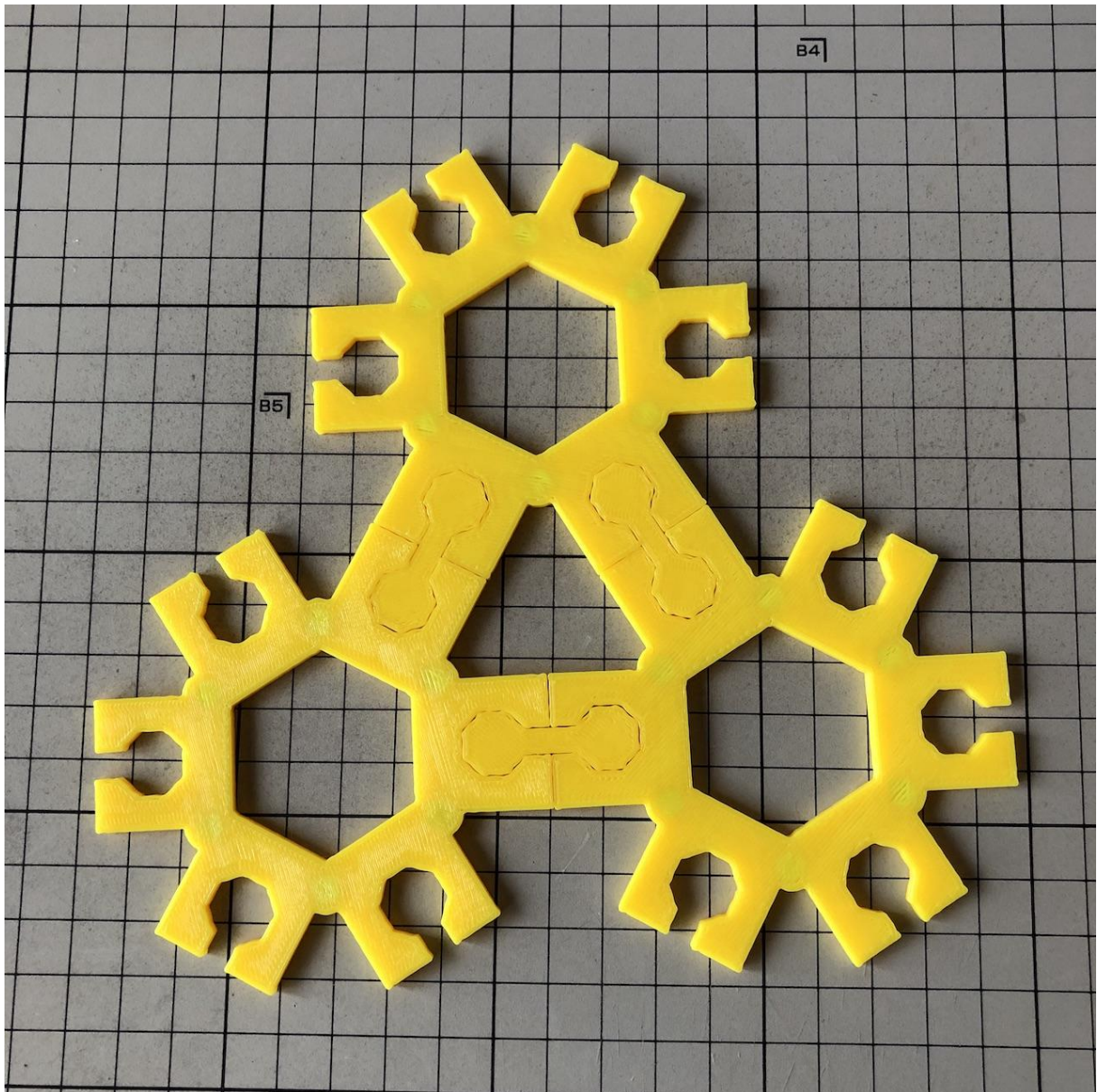
witch

When the "base unit" and "connector" are completed, they will look like this

base unit connector



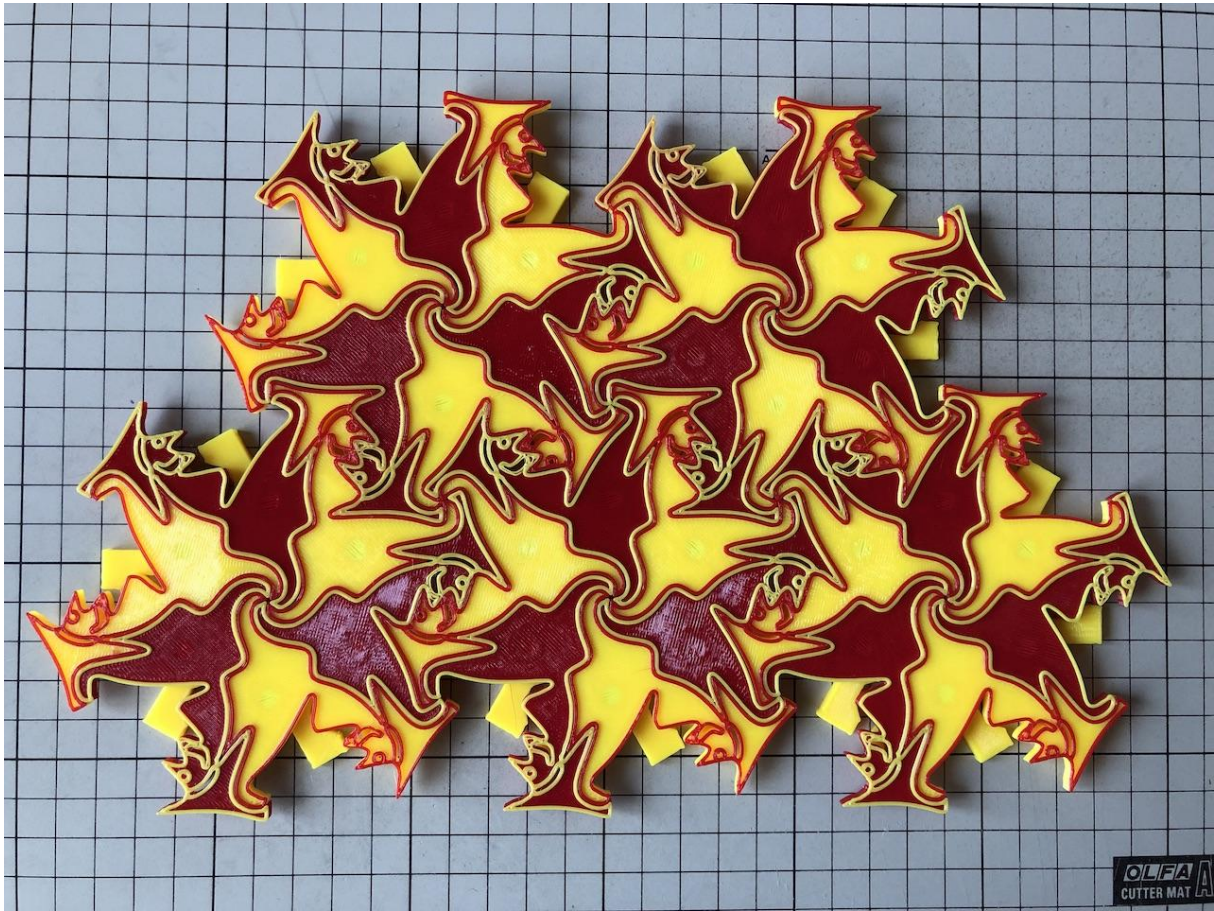
Use connectors to connect base units.
connector base unit



If you place some witches on top of it, it will look like the following picture.
 In this picture, 5 base units are used.

witch

5 base unit



Parameters

パラメータ					
			すべてのパラメータをフィルタ		
			+ ユーザ パラメータ		<input checked="" type="checkbox"/> 自動更新
パラメータ	▼	名前	単位	式	値
★ お気に入り					
▼	fx	ユーザ パラメータ			
☆	ユーザ パラメータ	base_length	mm	50 mm	50.00
☆	ユーザ パラメータ	base_thickness	mm	magnet_thickness + magnet_bottom_thickness + magnet_top_thickness	3.20
☆	ユーザ パラメータ	upper_thickness	mm	0.6 mm	0.60
☆	ユーザ パラメータ	magnet_diameter	mm	5.2 mm	5.20
☆	ユーザ パラメータ	magnet_thickness	mm	2.4 mm	2.40
☆	ユーザ パラメータ	wall_thickness	mm	1 mm	1.00
☆	ユーザ パラメータ	magnet_bottom_thickness	mm	0.2 mm	0.20
☆	ユーザ パラメータ	magnet_top_thickness	mm	0.6 mm	0.60
☆	ユーザ パラメータ	gap	mm	0.1 mm	0.10

OK

Model files

witch.3mf

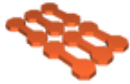




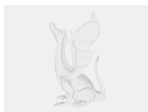
witch-x-15.3mf



base-unit.3mf



connector.3mf



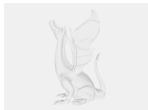
witch.step



base-unit.step



connector.step



witch.f3d

Print files



connector_04n_03mm_petg_mk3s_21m.gcode

⚙ PET ⚙ 0.40 mm ⚙ 0.30 mm ⌚ 0.35 hrs ⚖ 5 g 🖨 Prusa MK3/S/S+

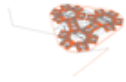
📄 Option



witch_04n_03mm_petg_mk3s_15m.gcode

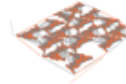
⚙ PET ⚙ 0.40 mm ⚙ 0.30 mm ⌚ 0.25 hrs ⚖ 3 g 🖨 Prusa MK3/S/S+

📄 Use this for test print.



base-unit_04n_03mm_petg_mk3s_1h51m.gcode

PET 0.40 mm 0.30 mm 1.86 hrs 29 g Prusa MK3/S/S+
 Option



witch-x-15_04n_03mm_petg_mk3s_3h40m.gcode

PET 0.40 mm 0.30 mm 3.67 hrs 55 g Prusa MK3/S/S+

License

This work is licensed under a
[Creative Commons \(4.0 International License\)](#)



Attribution—Noncommercial—Share Alike

- | Sharing without ATTRIBUTION
- | Remix Culture allowed
- | Commercial Use
- | Free Cultural Works
- | Meets Open Definition