



Mandalorian and Grogu lithophane



Nikolay

[VIEW IN BROWSER](#)

updated 4. 7. 2023 | published 4. 7. 2023

Summary

Mandalorian and Grogu lithophane based on an artwork for the series.

[Art & Design](#) > [Other Art & Designs](#)

Tags: [lithophane](#) [mandalorian](#) [bambulab](#) [artwork](#) [lithophane](#)
[litho](#) [poster](#) [frame](#) [mando](#) [bambu](#) [grogue](#) [starwars](#)

Mandalorian and Grogu lithophane based on an artwork for the series.
Made with <https://lithophanemaker.com/Color%20Lithophane.html> website.
Big thank you for the great tool!

Printed with 0.2 nozzle and Bambu Lab CMYK PLA.

Model files



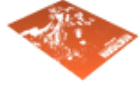
mandalorian_ver28_xlg_magenta.stl

☐ magenta layer



mandalorian_ver28_xlg_white.stl

☐ white base layer



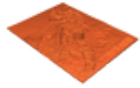
mandalorian_ver28_xlg_yellow.stl

☐ yellow layer



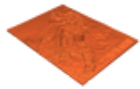
mandalorian_ver28_xlg_cyan.stl

☐ cyan layer



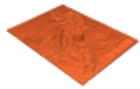
mandalorian_ver28_xlg_top_white.stl

☐ white top layer



mando_litho_generic.3mf

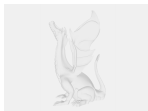
☐ Generic .3mf file



mando_litho.3mf

☐ .3mf file for Bambu Studio

Other files



settings-mandalorian_ver28_xlg.txt

☐ Text file with slicer recommended slicer settings

License

This work is licensed under a
Creative Commons (4.0 International License)



Attribution-NonCommercial

- ✗ | Sharing without ATTRIBUTION
- ✓ | Remix Culture allowed
- ✗ | Commercial Use
- ✗ | Free Cultural Works
- ✗ | Meets Open Definition