

Small parts box, magnetic

3 3D printing for all

[VIEW IN BROWSER](#)

updated 30. 6. 2023 | published 30. 6. 2023

Summary

Used to store the small parts like bolts, nuts, washers etc. when conducting maintenance.



6.94 hrs



3 pcs



0.30 mm
0.20 mm



0.40 mm



PET



165 g



Prusa MK4

[Hobby & Makers](#) > [Automotive](#)

Tags: [box](#) [maintenance](#) [vehicle](#)

Manufacturing procedure:

- Material: PETG
- 3D Printer: FDM 3D printer, average print time 5 - 7 hours
- Slicer settings: 0.2-0.3mm layer height, 3 perimeters, supports are needed only for hooks/clips, clips need to be oriented side down during the printing.
- Post processing instructions: Clean the stringing, clean the thread.

Assembly instructions:

1. Use neodymium magnets 20x6x2mm.

2. Insert 4 magnets inside the holes on the bottom of the box.
3. Glue 3 magnets inside the holders on the back of the box using superglue
4. If needed use the two, 3D printed detachable clamps in the front of the box.
5. If needed insert the partitions inside the box to separate different small parts.

Detailed description of the component/product/workflow and its use:

- Do not use on the surface that might get scratched.
- Suitable only to store small parts (not heavy items).
- Before use ensure, magnets cannot damage items in the proximity of the box.

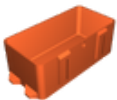
Model files



small-parts-box_repair-box-v10_hook-1.stl



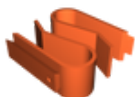
small-parts-box_repair-box-v10_partition-2.stl



small-parts-box_repair-box-v10_box-main.3mf



small-parts-box_repair-box-v10_partition-3.stl



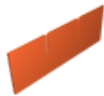
small-parts-box_repair-box-v10_hooks.3mf



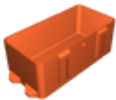
small-parts-box_repair-box-v10_hook-2.stl



small-parts-box_repair-box-v10_partitions.3mf



small-parts-box_repair-box-v10_partition-1.stl



small-parts-box_repair-box-v10_box-main.stl

Print files



small-parts-box_repair-box-v10_partitions_04n_03mm_... .gcode

PET 0.40 mm 0.30 mm 1.69 hrs 44 g Prusa MK4



small-parts-box_repair-box-v10_hooks_04n_02mm_petg_... .gcode

PET 0.40 mm 0.20 mm 1.16 hrs 13 g Prusa MK4



small-parts-box_repair-box-v10_box-main_04n_03mm_pe... .gcode

PET 0.40 mm 0.30 mm 4.09 hrs 108 g Prusa MK4

License

This work is licensed under a
[Creative Commons \(4.0 International License\)](https://creativecommons.org/licenses/by-sa/4.0/)



Attribution-ShareAlike

- ✗ | Sharing without ATTRIBUTION
- ✓ | Remix Culture allowed
- ✓ | Commercial Use
- ✓ | Free Cultural Works
- ✓ | Meets Open Definition