



## Aqara Wireless Mini Switch - Cover For Changing The Housing Color

[VIEW IN BROWSER](#)

updated 31. 1. 2024 | published 31. 1. 2024

## Summary

Aqara Wireless Mini Switch - Cover For Changing The Housing Color

[Household](#) > [Other House Equipment](#)

### Hello Everyone

Since 2014, I am a maniac of building automation, or colloquially speaking, smart home solutions. Currently, my home is practically 100% automated. I have 12 pieces of Aqara Wireless Mini Switch. It is present in few room of my house. However, I did not always like the fact that it is only available in white. Over a year ago, I designed a housing for it that allows you to change the color and adapt it to the room where it is used e.g. to the color of the wall or furniture on which it is mounted.

I have two versions available for download. The first for a single button and the second version for a double button. The Cover are without names and symbol. You can add them individually in the slicer. The name or symbol must protrude 0.04mm above the cover. Only then the first layer is printed correctly and you can see the visual effect in the photo gallery. There are also two buttons. One without name and symbol and the other with switch symbol. You will need some thin double sided tape to stick the button

When you complete the project, please share a photo and a comment. Thank you and have a nice day.

#### IMPORTANT - READ :

Please note that each printer is calibrated differently, has individual user settings, and each uses a different type and manufacturer of filaments. I tested the project on PLA filaments from brands such as Polymaker, FormFutura, Bambu Lab, Fiberlogy, Spectrum and Eryone. Each time the size after printing was perfect for the Aqara Wireless Mini Switch. If you decide to print the Cover with a different material, pay attention to its shrinkage and the settings of your printer. You can always make it a little bigger and if it's too loose, just use a piece of paper to make side pads. Download a file for a size test print.

#### How to print ? :

- Material : Any (I tested with PLA)
- Layer Height : 0.2mm
- Infill : 20%
- Wall Loops : 3
- Top Layers : 3
- Bottom Layers : 4
- Support : No
- Brim : No
- Brim Auto : No **(Be sure to disable Brim Auto. When printing in color Cover, with Brim Auto on, it may cause a problem on the first layer)**

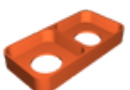
## Model files



aqara-wireless-mini-switch-cover-all-project.3mf



aqara-wireless-mini-switch-cover-x1.stl



aqara-wireless-mini-switch-cover-x2.stl



**aqara-button-switch-symbol.stl**

---



**aqara-button-clear.stl**

---



**aqara-wireless-mini-switch-cover-x1-size-test-5mm.stl**

---



**aqara-wireless-mini-switch-cover-x2-size-test-5mm.stl**

## License ©

This work is licensed under a **Standard Digital File License**.

Digital files have a strict non-commercial, personal use only license.

You shall not share, sub-license, sell, rent, host, transfer, or distribute in any way the digital file or 3D printed versions of this object, nor any other derivative work of this object in its digital or physical format (including remixes of this object).

You can not host these files on other digital platforms, web stores or cloud repositories.

The objects may not be used in any way whatsoever in which you charge money, collect fees.

---

- ✗ | No sharing or redistributing in any way of the 3D files or derivatives
- ✗ | No remixing
- ✗ | Non-commercial Use (only for personal use)