

Impeller - Open Radial Blade



dtv.dev

[VIEW IN BROWSER](#)

updated 1. 7. 2023 | published 1. 7. 2023

Summary

A parametric model of an impeller found in a bathroom exhaust fan.

[Hobby & Makers](#) > [Mechanical Parts](#)

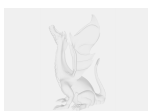
Tags: [impeller](#) [hvac](#) [blower](#) [replacement](#) [exhaustfan](#)
[parametric](#) [bathroom](#) [openscad](#)

This is a parametric model of an impeller found in a bathroom exhaust fan. Use OpenSCAD's customizer to configure this model.

Before printing the whole part, print a quick test part with the `hubOnly` parameter enabled. Adjust the shaft diameter until you achieve a snug fit.

I used the 0.3mm DRAFT print settings (20% infill, 2 perimeters) with my Prusa i3 MK3 and Prusament PETG with the official filament profile.

Model files



openradialbladeimpeller.scad

☐ Tested with OpenSCAD 2021.01



example-openradialbladeimpeller.3mf

❏ EXAMPLE MODEL ONLY. This likely won't fit your application or printer exactly.

License ©

This work is licensed under a
Creative Commons (International License)



Public Domain

- ✓ | Sharing without ATTRIBUTION
- ✓ | Remix Culture allowed
- ✓ | Commercial Use
- ✓ | Free Cultural Works
- ✓ | Meets Open Definition