



Parametric Fridge Door Handle

 Saniainen

[VIEW IN BROWSER](#)

updated 30. 6. 2023 | published 30. 6. 2023

Summary

Parametric fridge door handle, just input distance between holes in user parameters.

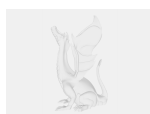
[Household](#) > [Kitchen](#)

Tags: [refridgeratorhandle](#) [fridgedoorhandle](#) [fridge](#) [refrigerator](#)

Parametric fridge door handle, just input distance between holes in user parameters.

Print upright, flatter side down, if you have handle on other side, mirror the model. Supports may be needed for holes, requires really good bed adhesion, if in doubt, use raft.

Model files



handle-v7.step



handle-v7.f3d



handle-133mm.stl

License ©

This work is licensed under a
[Creative Commons \(4.0 International License\)](#)



Attribution

-
- ✗ | Sharing without ATTRIBUTION
 - ✓ | Remix Culture allowed
 - ✓ | Commercial Use
 - ✓ | Free Cultural Works
 - ✓ | Meets Open Definition