



Ryobi Charger Pegboard Mount



dimo414

[VIEW IN BROWSER](#)

updated 30. 6. 2023 | published 30. 6. 2023

Summary

1" pegboard mount for Ryobi 18v charger using the charger's keyhole mount points.



1.01 hrs



1 pcs



0.20 mm



0.40 mm



PET



10 g



Prusa MINI /
MINI+

[Hobby & Makers](#) > [Tools](#)

Tags: [keyhole](#) [pegboard](#) [keyholehanger](#) [charger](#) [ryobi](#)
[parametric](#) [chargermount](#) [openscad](#)

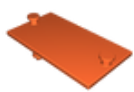
This is a simple model to let you hang your Ryobi 18v charger on standard American pegboard (1/4" holes, 1" spacing). Credit to @brnhx_289665 for the [pegboard peg](#) model which is used here (also to @ScruffyOrc_217627 for [this model](#), though I didn't end up using it).

The model was made in OpenSCAD and is lightly parameterized to support other keyhole distances, so this might work for other similar objects you want to mount. If you leave a comment with the dimensions you need I'd be happy to upload other variants as well.

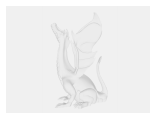
Printing

I recommend printing this on its side with (snug) supports. This will ensure the pegs and keys are strongly attached to the body of the model and shouldn't shear off as easily as other orientations would. I used PETG for additional strength though I wouldn't be surprised if PLA is plenty strong enough in this orientation. I didn't bother changing the number of perimeters but you can do so for even more rigidity.

Model files



ryobi-charger-pegboard.3mf









ryobi-charger-pegboard.scad

Print files



ryobi-charger-pegboard_02mm_petg_mini_1h1m.gcode

 PET  0.40 mm  0.20 mm  1.01 hrs  10 g  Prusa MINI / MINI+

License

This work is licensed under a
[Creative Commons \(4.0 International License\)](https://creativecommons.org/licenses/by-sa/4.0/)



Attribution-ShareAlike

-
- ✗ | Sharing without ATTRIBUTION
 - ✓ | Remix Culture allowed

- ✓ | Commercial Use
- ✓ | Free Cultural Works
- ✓ | Meets Open Definition