

3D MODEL ONLY



## Dire Crowley Cane - Twisted Wonderland - FDM



ICosplayInsanity

[VIEW IN BROWSER](#)

updated 1. 7. 2023 | published 1. 7. 2023

### Summary

Headmage Dire Crowley's Cane

[Costumes & Accessories](#) > [Props](#)

Tags: [nightravencollege](#) [twst](#) [twistedwonderland](#) [direcrowley](#) [headmage](#)

Headmage Dire Crowley's cane from his staff uniform.

Lettering at the bottom of the cane spells RAVEN.

Print all files and keys once and glue together using 2-part epoxy. All key tolerance is 0.2mm.

The **CaneBottom** and **CaneTop** fit 3/4" schedule 40 PVC Pipe. The **CaneBottom** is glued into the PVC pipe 90 degrees to the front of the **CaneTop**.

Crow model that sits on the top of the staff is modified from DragonArtist15's Sitting Crow Model <https://www.printables.com/model/220718-sitting-crow>

# This remix is based on



## Sitting Crow

by DragonArtist15

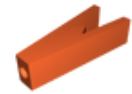
## Model files



**r.stl**



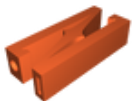
**a.stl**



**v.stl**



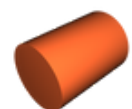
**e.stl**



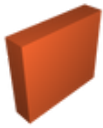
**n.stl**



**canebottom.stl**

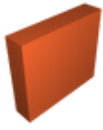


**rkey1.stl**



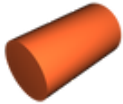
**akey1.stl**

---



**akey2.stl**

---



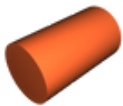
**vkey1.stl**

---



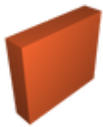
**ekey1.stl**

---



**nkey1.stl**

---



**nkey2.stl**

---



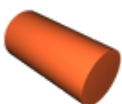
**staffcrow.stl**

---



**canetop.stl**

---



**crowkey.stl**

# License ©

This work is licensed under a  
**Creative Commons (4.0 International License)**



**Attribution—Noncommercial—No Derivatives**

---

- ✗ | Sharing without ATTRIBUTION
- ✗ | Remix Culture allowed
- ✗ | Commercial Use
- ✗ | Free Cultural Works
- ✗ | Meets Open Definition