

Hinged Mobile stand

 **Kippu Lal**

[VIEW IN BROWSER](#)

updated 1. 7. 2023 | published 1. 7. 2023

Summary

Mobile stand big with hinged joints and revolve.



9.14 hrs



3 pcs



0.30 mm
0.20 mm



0.40 mm



PLA



121 g



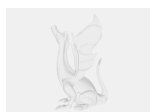
Creality
Ender 3

[3D Printers](#) > [Accessories](#)

Tags: [holder](#) [mobilestand](#) [phone](#) [hinged](#)

Tall mobile stand with hinged joints , print separately. Use 7mm wooden dovels as inserts into the hinges or print the dovel attached separately.

Model files



dowel-holder.f3d



hinged-stand.f3d

Print files



stand-body-1.gcode

🌀 PLA 🌀 0.40 mm 🌀 0.30 mm 🕒 2.97 hrs 📊 50 g



stand-body-2.gcode

🌀 PLA 🌀 0.40 mm 🌀 0.20 mm 🕒 5.85 hrs 📊 70 g



dowel-holder.gcode

🌀 PLA 🌀 0.40 mm 🌀 0.30 mm 🕒 0.32 hrs 📊 1 g

License ©

This work is licensed under a
[Creative Commons \(International License\)](#)



Public Domain

- ✓ | Sharing without ATTRIBUTION
- ✓ | Remix Culture allowed
- ✓ | Commercial Use
- ✓ | Free Cultural Works
- ✓ | Meets Open Definition