



Universal camera platform and eufy indoor cam adapter for Prusa mk4



Christian Englmeier

[VIEW IN BROWSER](#)

updated 1. 7. 2023 | published 1. 7. 2023

Summary

Webcam holder for the back of the MK4. Inclusive Adapter für eufy indoor camera



N/A



2 pcs



0.20 mm



0.40 mm



PLA
PET



N/A



Prusa MK4

[3D Printers](#) > [3D Printers - Upgrades](#)

Tags: [prusa](#) [webcam](#) [indoor](#) [mk4](#) [cam](#) [eufy](#)

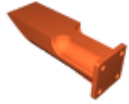
Webcam holder for the back of the MK4. Instead of the eufy adapter, other holders can also be subsequently attached to the basic holder with double-sided adhesive tape or superglue.

Print settings:

- PLA or PETG
- organic supports
- 0.2 layer
- 0.4 nozzle

- Print the holder with the height modifier from 0 - 4 mm with 100% infill and 3 perimeters

Model files



mk4-universal-cam-mount.stl



eufy-indoor-adapter.stl



mk4-kamerhalter.shapr

Print files



cameramount-pla_04n_02mm_pla_mk4_3h24m.gcode

⚙️ PLA ⚙️ 0.40 mm ⚙️ 0.20 mm ⌚ 3.40 hrs ⚖️ 45 g 🖨️ Prusa MK4



cameramount-petg_04n_02mm_petg_mk4_3h30m.gcode

⚙️ PET ⚙️ 0.40 mm ⚙️ 0.20 mm ⌚ 3.51 hrs ⚖️ 46 g 🖨️ Prusa MK4

License ©

This work is licensed under a
[Creative Commons \(4.0 International License\)](https://creativecommons.org/licenses/by-nc-sa/4.0/)



Attribution—Noncommercial—Share Alike

- ✗ | Sharing without ATTRIBUTION
- ✓ | Remix Culture allowed
- ✗ | Commercial Use
- ✗ | Free Cultural Works
- ✗ | Meets Open Definition