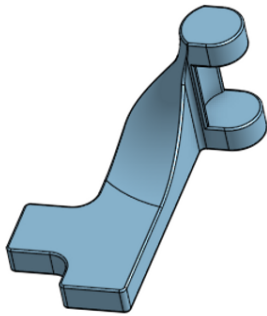


3D MODEL ONLY



Atlas 7B Shaper - L6-723 Belt Guard Hinge - Casting Pattern



kaje

[VIEW IN BROWSER](#)

updated 12. 1. 2021 | published 12. 1. 2021

Summary

Caveat : I do not have casting capability in my shop, so I have not tested these prints (I made them for someone else).

[Hobby & Makers](#) > [Mechanical Parts](#)

Caveat : I do not have casting capability in my shop, so I have not tested these prints (I made them for someone else).

This print is intended to be used as a pattern for casting a replacement part for an Atlas 7B metal shaper. The photos show the CAD for the pattern, and also for the finished part (with holes).

For more on this machine, including links to drawings with dimensions for finished part, see this link :

<https://sites.google.com/site/lagadoacademy/machining---lathes-mills-etc/my-shaper---atlas-7b>

The OnShape 3D CAD file for this is here :

<https://cad.onshape.com/documents/17177cb0986f82387655377c/w/e2f1b8d151bbb49f2b3de46d/e/635dbd8295dd974fc1d953fa>

Print instructions

Remember you must scale this print to allow for shrinkage after casting.

Print in the filament of your choice; suggested settings :

- perimeters = 3
- 0.2mm layer height
- 20% rectilinear infill

Model files



I6-723pattern-I6-723.stl

[Find source .stl files on Thingiverse.com](#)

License ©

This work is licensed under a
Creative Commons (International License)



Public Domain

-
- ✓ | Sharing without ATTRIBUTION
 - ✓ | Remix Culture allowed
 - ✓ | Commercial Use
 - ✓ | Free Cultural Works
 - ✓ | Meets Open Definition