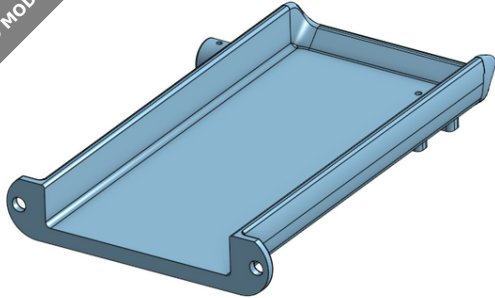


3D MODEL ONLY



Atlas 7B Shaper - S7-107 Oil Pan - Casting Pattern



kaje

[VIEW IN BROWSER](#)

updated 12. 1. 2021 | published 12. 1. 2021

Summary

Caveat : I do not have casting capability in my shop, so I have not tested these prints (I made them for someone else).

[Hobby & Makers](#) > [Mechanical Parts](#)

Caveat : I do not have casting capability in my shop, so I have not tested these prints (I made them for someone else).

This print is intended to be used as a pattern for casting a replacement part for an Atlas 7B metal shaper. The photos show the CAD for the pattern, and also for the finished part (with holes).

For the pattern, the faces for the side boss, bottom boss, and mounting face are all 0.1" longer than the finished size, to allow for milling after casting.

These prints are intended to be used to make a split pattern, with the pan split into a top and bottom half. Because the oil pan is so large, the print is split into multiple parts. There are 1/8" holes in the parts to use for pins (1/8" wood dowel suggested) to align the parts for gluing, and to align the top and bottom for casting.

Two different sets are provided. There are fewer parts in the second set, in which two of the longer pieces might be printed diagonally on some printers.

For more on this machine, including links to drawings with dimensions for finished part, see this link :

<https://sites.google.com/site/lagadoacademy/machining---lathes-mills-etc/my-shaper---atlas-7b>

The OnShape 3D CAD file for this is here :

<https://cad.onshape.com/documents/587b3499f49a1941dd1e8c38/w/1b55686346fe1dd0d136bb90/e/fc849db64127c51ce493509b>

Print instructions

Remember you must scale this print to allow for shrinkage after casting.

Print in the filament of your choice; suggested settings :

- perimeters = 3
- 0.2mm layer height
- 20% rectilinear infill

Model files



s7-107oilpanpattern4b2-oilpan-frontsideplain.stl



s7-107oilpanpattern4b2-oilpan-frontsideboss.stl



s7-107oilpanpattern4b2-oilpan-bottomfront.stl



s7-107oilpanpattern4b2-oilpan-flange.stl



s7-107oilpanpattern4b2-oilpan-bottomboss.stl



s7-107oilpanpattern4b2-oilpan-rearsideplain.stl



s7-107oilpanpattern4b2-oilpan-rearsideboss.stl



s7-107oilpanpattern4b2-oilpan-bottomrear.stl



s7-107oilpanpattern5b-oilpan-flange.stl



s7-107oilpanpattern5b-oilpan-bottomfront.stl



s7-107oilpanpattern5b-oilpan-sideplain.stl



s7-107oilpanpattern5b-oilpan-bottomboss.stl



s7-107oilpanpattern5b-oilpan-sideboss.stl



s7-107oilpanpattern5b-oilpan-bottomrear.stl

License ©

This work is licensed under a
Creative Commons (International License)



Public Domain

- ✓ | Sharing without ATTRIBUTION
- ✓ | Remix Culture allowed
- ✓ | Commercial Use
- ✓ | Free Cultural Works
- ✓ | Meets Open Definition