



Gloomhaven Effect Token Organizer



Ice Wolfy

[VIEW IN BROWSER](#)

updated 12. 4. 2022 | published 12. 1. 2021

Summary

Gloomhaven Effect Token Organizer This was made for the game of Gloomhaven.



3.14 hrs



1 pcs



0.20 mm



0.40 mm



PLA



30 g



Prusa
MK3/S/S+

[Toys & Games](#) > [Board Games](#)

Tags: [gloomhaven](#) [gloomhavenorganizer](#) [icebluewolfy](#) [icewolfy](#)

Gloomhaven Effect Token Organizer

This was made for the game of Gloomhaven. I was inspired after I saw a damage token organizer (<https://www.thingiverse.com/thing:4153056/makes>). I could not find a similar item for the effect tokens, so I made my own. This was my first non school related 3D design. It works very well for my group in Gloomhaven. I am open to suggestions, I would very much appreciate a comment with a critique, suggestion, or just praise.

Print instructions Category: Toy & Game Accessories

Summary Gloomhaven Effect Token Organizer

This was made for the game of Gloomhaven. I was inspired after I saw a damage token organizer (<https://www.thingiverse.com/thing:4153056/makes>). I could not find a similar item for the effect tokens, so I made my own. This was my first non school related 3D design. It works very well for my group in Gloomhaven. I am open to suggestions, I would very much appreciate a comment with a critique, suggestion, or just praise.

A reupload as the last one is bugged out and doesn't show up in search.

Print Settings

Rafts: No

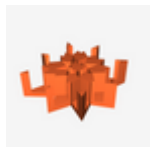
Resolution: 0.2

Infill: 10%

Filament: PLA

Im not very advanced at 3D printing. These are just what I used. Dont take them as concrete settings.

Model files



gloomhaven_effect_token_holder.stl

Print files



gloomhaven-effect-token-holder_02mm_pla_mk3s_3h.gcode

🌀 PLA 📏 0.40 mm 📐 0.20 mm ⌚ 3.14 hrs ⚖️ 30 g 🖨️ Prusa MK3/S/S+

[Find source .stl files on Thingiverse.com](https://www.thingiverse.com/thing:4153056/makes)

License ©

This work is licensed under a
Creative Commons (4.0 International License)



Attribution

- ✗ | Sharing without ATTRIBUTION
- ✓ | Remix Culture allowed
- ✓ | Commercial Use
- ✓ | Free Cultural Works
- ✓ | Meets Open Definition