



Pokemon Card Box



amedeomar

[VIEW IN BROWSER](#)

updated 1. 7. 2023 | published 1. 7. 2023

Summary

A nice, useful and easy-to-print box for Pokemon cards



7.16 hrs



2 pcs



0.20 mm



0.40 mm



PLA



103 g



Prusa
MK3/S/S+

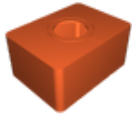
[Toys & Games](#) > [Board Games](#)

Tags: [pokemons](#) [cardholder](#) [pokemoncards](#) [cardstand](#)
[pokemon](#) [cards](#)

Infill 15%

No supports required

Model files



top.stl



bottom.stl

Print files



top_02mm_pla_mk3s_3h36m.gcode

PLA 0.40 mm 0.20 mm 3.60 hrs 52 g Prusa MK3/S/S+



bottom_02mm_pla_mk3s_3h33m.gcode

PLA 0.40 mm 0.20 mm 3.56 hrs 51 g Prusa MK3/S/S+

License ©

This work is licensed under a
[Creative Commons \(4.0 International License\)](#)



Attribution

- ✗ | Sharing without ATTRIBUTION
- ✓ | Remix Culture allowed
- ✓ | Commercial Use
- ✓ | Free Cultural Works
- ✓ | Meets Open Definition

