

combines camera + lamp holder



Wilko

[VIEW IN BROWSER](#)

updated 12. 1. 2021 | published 12. 1. 2021

Summary

This is a holder for both a camera and an LED lamp. Position of camera and lamp is adjustable.



11.25 hrs



6 pcs



0.20 mm



0.40 mm



PLA



125 g



Prusa MINI /
MINI+

[3D Printers](#) > [Accessories](#)

Tags: [mini](#) [mk3s](#) [cameraholder](#) [lampholder](#)

This is a holder for both a camera and an LED lamp.

Position of camera and lamp is adjustable.

The complete holder + camera + lamp can be used at on different printer positions.

Print instructions

All parts are printed separately, see 3mf files.

Only little support for radii.

The knurled nuts have an inserted M5 nut.

See 3mf files for print bed orientation, modifiers, used perimeters, infill etc.

Myself I've printed the parts at 0.2mm layerheight with a 0.4mm nozzle.

The dowels are glued to the sides. I've used Cyanoacrylate and activator.

Stp files for the camera- and lamp holder are added to suit the parts for your own peripheral accessoires.

The CAD image doen not show hardware / peripheral devices.

Additional hardware:

2x m5 nut (as an insert in the knurled nuts).

1x M5x 40 hexagon bolt (lamp support).

1x M5x60 hexagon bolt.

6 x wood screw 30mm screws to screw the " cam holder grip" to the workbench.

Model files



lamp-clamp-v3.stl



dowel.stl



side-right.stl



lamp-clamp-v33.3mf



cam-support-v3.stl



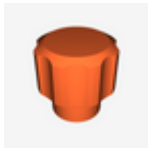
cam-support-v3.3mf



cam-holder-dowels.3mf



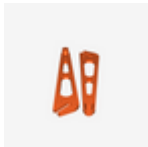
side-left.stl



knurl-nut-m5-inserted.stl



knurl-nut-m5-inserted.3mf



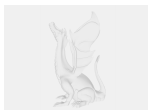
cam-holder-sides.3mf



grip.stl



cam-holder-grip-2.3mf



cam-support.stp



lamp-clamp.stp

Print files



lamp-clamp-v3_02mm_pla_mini_1h4m.gcode

🌀 PLA 📏 0.40 mm 📐 0.20 mm ⌚ 1.07 hrs ⚖️ 14 g 🖨️ Prusa MINI / MINI+



cam-support-v3_02mm_pla_mini_1h43m.gcode

🌀 PLA 📏 0.40 mm 📐 0.20 mm ⌚ 1.71 hrs ⚖️ 23 g 🖨️ Prusa MINI / MINI+



cam-holder-sides_02mm_pla_mk3s_2h30m.gcode

🌀 PLA 📏 0.40 mm 📐 0.20 mm ⌚ 2.51 hrs ⚖️ 35 g 🖨️ Prusa MK3/S/S+



knurl-nut-m5-inserted_02mm_pla_mini_1h1m.gcode

🌀 PLA 📏 0.40 mm 📐 0.20 mm ⌚ 1.02 hrs ⚖️ 9 g 🖨️ Prusa MINI / MINI+



cam-holder-dowels_02mm_pla_mini_1h20m.gcode

🌀 PLA 📏 0.40 mm 📐 0.20 mm ⌚ 1.34 hrs ⚖️ 9 g 🖨️ Prusa MINI / MINI+



cam-holder-grip-2_02mm_pla_mini_3h36m.gcode

🌀 PLA 📏 0.40 mm 📐 0.20 mm ⌚ 3.60 hrs ⚖️ 36 g 🖨️ Prusa MINI / MINI+

License ©

This work is licensed under a
[Creative Commons \(4.0 International License\)](#)



Attribution-NonCommercial

- ✗ | Sharing without ATTRIBUTION
- ✓ | Remix Culture allowed

- ✕ | Commercial Use
- ✕ | Free Cultural Works
- ✕ | Meets Open Definition