



Ikea Vilmar Chair fix



Rui Carmo

[VIEW IN BROWSER](#)

updated 2. 7. 2023 | published 2. 7. 2023

Summary

Fix for your Ikea Vilmar Chairs



1.80 hrs



2 pcs



0.40 mm
0.20 mm



0.80 mm
0.40 mm



PET



44 g

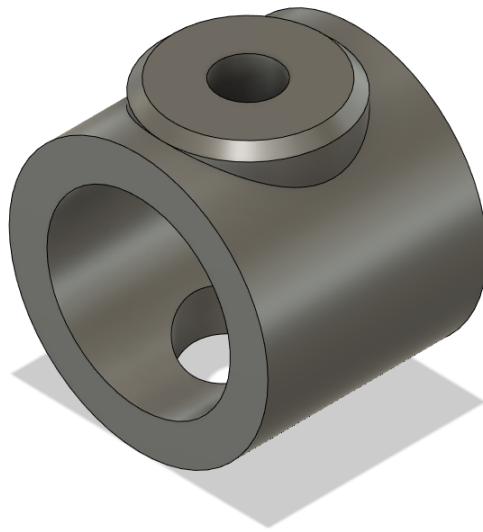


Prusa MK4

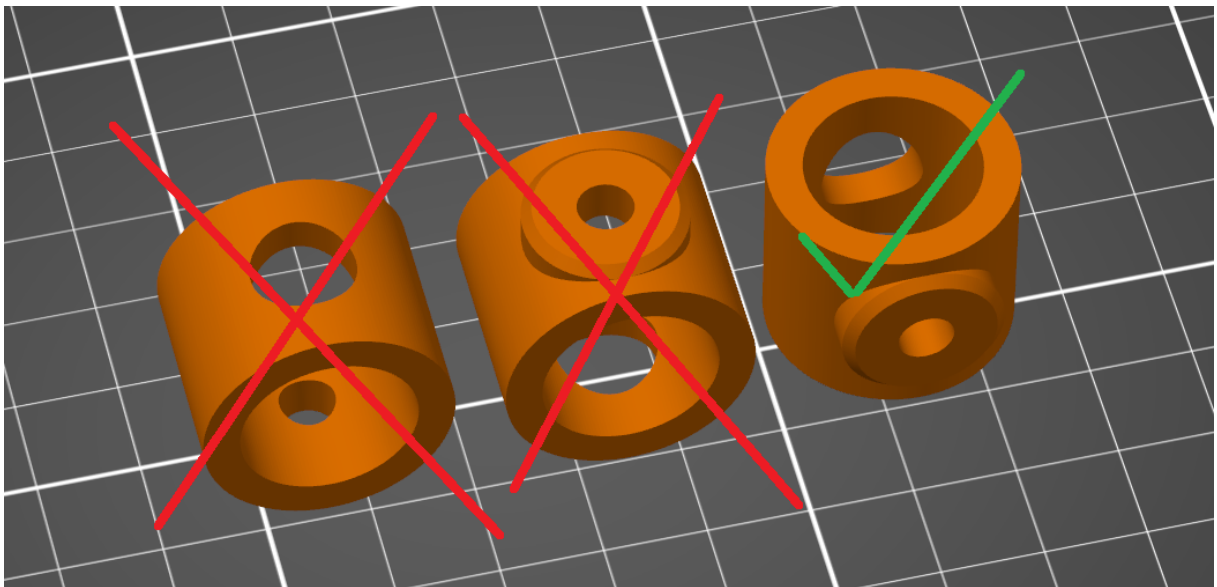
[Household](#) > [Kitchen](#)

Tags: [vilmarchair](#) [vilmar](#) [ikea](#) [chair](#)

Quick fix for your IKEA Vilmar chairs.



Drawing optimized for 3D printing, with thicker walls than original, and with the correct printing orientation, i expect it to last longer than the original.



To print I prefer 0,8 nozzle because it's way faster and also stronger, but with a 0,4mm nozzle works also.

PETG is preferred, PLA should also work.

If you need to slice them for yourself, please use 6 perimeters (this is to ensure the model is solid)

Model files



fix.3mf

Print files



fix_08n_04mm_petg_mk4_29m.gcode

PET 0.80 mm 0.40 mm 0.48 hrs 22 g Prusa MK4



fix_04n_02mm_petg_mk4_1h19m.gcode

PET 0.40 mm 0.20 mm 1.32 hrs 22 g Prusa MK4

License ©

This work is licensed under a
[Creative Commons \(International License\)](#)



Public Domain

- ✓ | Sharing without ATTRIBUTION
- ✓ | Remix Culture allowed
- ✓ | Commercial Use
- ✓ | Free Cultural Works
- ✓ | Meets Open Definition