



PC Controller Hub

 **Eped**

[VIEW IN BROWSER](#)

updated 2. 7. 2023 | published 2. 7. 2023

Summary

A Controller Hub for when your PC is hidden away and hard to reach.

[Gadgets](#) > [Computers](#)

Tags: [hub](#) [case](#)

My PC is tugged away in a corner and it makes it hard to reach it and power it on.

So I decided to make a Controller Hub that allows me to power on and restart my PC.

Further 2 USB Slots are available and 1 USB-C.

2 further Button have been added, one for the lightning of my table and the other one for diy underdesktop fans.

4 LEDs, 1 for the power indicator, 1 for the HDD indicator, 1 for Backup process indicator and lastly 1 for the USB-C indicator.

I've included the Fusion 360 file so the naming of the Buttons/LEDs can be changed according to your needs.

Note: My print got a little messed up, hence you can't see the name plates in the picture.

Model files



case.stl



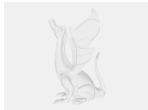
lid.stl



spacer.stl



holder.stl



pc-controller.f3d

License

This work is licensed under a
[Creative Commons \(International License\)](#)



Public Domain

- ✓ | Sharing without ATTRIBUTION
- ✓ | Remix Culture allowed
- ✓ | Commercial Use
- ✓ | Free Cultural Works
- ✓ | Meets Open Definition