



Native American Woman Hueforge filament painting



TheJoyOfPrinting

[VIEW IN BROWSER](#)

updated 11. 7. 2023 | published 11. 7. 2023

Summary

A filament painting made using midjourney and hueforge



13.59 hrs



1 pcs



0.08 mm



0.40 mm



PLA



74 g



Prusa
MK3/S/S+

[Art & Design](#) > [2D Plates & Logos](#)

Tags: [nativeamerican](#) [filamentpainting](#) [hueforge](#)

This is a 5 color print. Created using **Hueforge** and midjourney.

Instructions are for bambu slicer and prusa slicer.

Print at 100% infill with a layer height of 0.08mm with a base layer of 0.24mm (used a base layer of 0.24 to provide some extra squish and hopefully reduce the corners lifting. I also threw mouse ears on check 3mf file)

Filaments Used:

PLA PolyLite Black Transmission Distance: 0.3

PLA Elegoo red Transmission Distance: 7

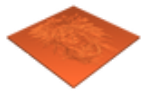
PLA PolyLite Orange Transmission Distance: 7.5
PLA PolyLite Lemon Yellow Transmission Distance: 6.5
PLA PolyLite White Transmission Distance: 5

Swap Instructions:

Black until layer #11 at 1.04mm
red until layer #16 at 1.44mm
Orange until layer #26 at 2.24mm
Lemon Yellow until layer #34 at 2.88mm
White for the rest.

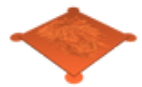
Play around with the colors if you like lmk what you think.

Model files



native_american_woman_front_150x150.stl

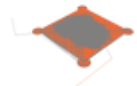
☐ For prusa slicer and bambu/orca slicer



native_american_woman_front_150x150.3mf

☐ If you want lilly pads for the corners use this file then change to your profile

Print files

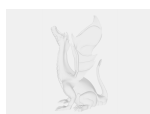


native_american_woman_front_150x150_008mm_pla_mk3s_... .gcode

☐ PLA ☐ 0.40 mm ☐ 0.08 mm ☐ 13.59 hrs ☐ 74 g ☐ Prusa MK3/S/S+

☐ DO NOT USE THIS (ONLY FOR TIMES AND ESTIMATES)

Other files



indian_woman2_describe.txt

☐ Text document for how to slice

License

This work is licensed under a
Creative Commons (4.0 International License)



Attribution-NonCommercial

- ✗ | Sharing without ATTRIBUTION
- ✓ | Remix Culture allowed
- ✗ | Commercial Use
- ✗ | Free Cultural Works
- ✗ | Meets Open Definition