



Insta360 One RS 1-inch 360 Camera Module Adaptors

 shallax

[VIEW IN BROWSER](#)

updated 2. 7. 2023 | published 2. 7. 2023

Summary

Shrouds that allow you to use other Insta360 One R/RS camera modules with your Insta360 One RS 1-inch 360 camera body

[Gadgets](#) > [Photo & Video](#)

Tags: [insta360](#) [insta360oner](#) [insta360oners](#)

These shrouds/ adaptors allow you to use the Insta360 One R 1" Leica and Insta360 One RS 4k "Boost" camera modules with the Insta360 One RS 1-inch 360 camera body.

Keep in mind that these two modules are designed to capture 16:9 when used with a One R/ RS body, which has the module oriented horizontally. When attached to the Insta360 One RS 1-inch 360 body, they will be oriented vertically, so will shoot in 9:16 (the accelerometer will make sure the video is oriented the right way up). If you want to shoot in 16:9, you'll need to hold the camera body horizontally.

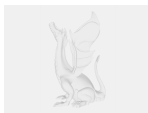
There are two models, one is designed for the 1" Leica module (which has a deeper profile), the other is the the 4k "Boost" module. The former model will also fit the 4k "Boost" module, but it's not as nice of a fit since the module can rock in the extra space.

Due to a slight overhang on the camera module, the 4k “Boost” module only fits with the lens positioned on the same face as the LCD screen. For this reason, it's also impossible to fit the One RS 360 camera module on the 1-inch 360 housing.

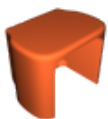
Print settings:

- ABS or PCCF
- 0.4mm nozzle
- Layer height 0.1mm to 0.2mm
- No supports
- 40% infill
- Print with the flat top surface on the build plate (i.e. “upside down”)

Model files



insta360-one-rs-1-inch-leica-1-inch-shroud.step



insta360-one-rs-1-inch-leica-1-inch-shroud.stl



insta360-one-rs-1-inch-4k-shroud.step



insta360-one-rs-1-inch-4k-shroud.stl

License ©

This work is licensed under a
[Creative Commons \(4.0 International License\)](#)



Attribution—Noncommercial—Share Alike

- ✗ | Sharing without ATTRIBUTION
- ✓ | Remix Culture allowed
- ✗ | Commercial Use
- ✗ | Free Cultural Works
- ✗ | Meets Open Definition