



Magnetic IDEX T1 Toolhead V2.0



m_IDEX

[VIEW IN BROWSER](#)

updated 25. 12. 2023 | published 25. 12. 2023

Summary

This design allows any replicator style printer to gain IDEX functionality

[3D Printers](#) > [Other Printer Parts & Upgrades](#)

Tags: [3dprinter](#) [3dprinterparts](#) [idex](#) [klipper](#) [idexprinter](#)
[magneticidex](#) [klipperfirmware](#)

V2.1 is available here: <https://www.printables.com/model/692818-magnetic-idex-t0-and-t1-v21>

This is a completely mechanical/magnetic IDEX 3D printer design. T1 tool can be installed on any replicator clone 3d printer. I have tested it on Flashforge Creator Pro 2.

Assembly BOM pdf is located in the [Tool 0 \(T0\)](#) printables listing here: <https://www.printables.com/model/517489-magnetic-idex-t0-toolhead>
T1 Side A and T1 Side B are the only parts unique for T1 toolhead.

Because of the mechanical nature of this printer, no additional X axis belt or motor is required.

It can accomplish all IDEX modes:

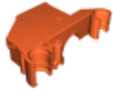
- Multi color/multi material

- Mirror
- Duplication

Model files



t1-side-a.3mf



t1-side-b.3mf



t1-tool-park-lever.3mf

License ©

This work is licensed under a
GNU



General Public License v3.0

-
- ✗ | Sharing without ATTRIBUTION
 - ✓ | Remix Culture allowed
 - ✓ | Commercial Use
 - ✓ | Meets Open Definition
 - i | Share under the same license