

Pen Plotter Ender 3 v2 CR Touch mount



Finisz

[VIEW IN BROWSER](#)

updated 7. 7. 2023 | published 7. 7. 2023

Summary

Pen Plotter mount for Ender 3 v2 with CR touch

[3D Printers](#) > [3D Printers - Upgrades](#)

Tags: [plotter](#) [holder](#) [ender3v2](#) [crtouch](#) [pen](#) [ender](#)
[ender3](#) [drawing](#) [mount](#)

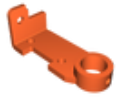
Hi!

I created mount for pen to attach to Ender 3v2 with cr touch so i could easily turn printer into pen plotter works great for me and I hope someone will like it too. To use it i slide pen a little lower than nozzle and set z-offset. To create graphics i use svg's imported to fusion360 and extrude them to 0.2mm so in slicer it's single layer. Extrusion multiplier i set to 0. I have slightly modified firmware on printer so i can set temps for 30 and dont get errors so this thing is up to you :)

Model files



plotter-v6.3mf



plotter-v6.stl

License

This work is licensed under a
[Creative Commons \(4.0 International License\)](#)



Attribution—NoDerivatives

-
- ✗ | Sharing without ATTRIBUTION
 - ✗ | Remix Culture allowed
 - ✓ | Commercial Use
 - ✓ | Free Cultural Works
 - ✓ | Meets Open Definition