

[REMIX] Raspberry Pi 4 Half Case VESA 75x75 mount



fischer-felix

[VIEW IN BROWSER](#)

updated 1. 7. 2023 | published 1. 7. 2023

Summary

A half case (only bottom half) for better cooling and airflow with two VESA 75x75mm mounting holes on one side.

[Hobby & Makers](#) > [Electronics](#)

Tags: [vesamount](#) [vesa75](#) [freecad](#) [rpi](#) [raspberrypi](#) [vesa](#) [rasberrypicase](#)

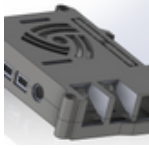
This case is a remix from [gurnarok's Pi 4 DIN rail case](#).

It only includes the lower half of the case in order to improve cooling of the Pi.

I also replaced the DIN rail mounts with two VESA 75x75mm mounting holes on one side, so it can be mounted to any monitor, or in my case an SSD holder.

The FreeCAD project file is included, so you can modify it more easily.

This remix is based on



Raspberry Pi 4 DIN rail case

by gurnarok

Model files



case_vesa_75.fcstd



case_vesa_75.stl



case_vesa_75.step

License

This work is licensed under a
[Creative Commons \(4.0 International License\)](https://creativecommons.org/licenses/by/4.0/)



Attribution

- ✗ | Sharing without ATTRIBUTION
- ✓ | Remix Culture allowed
- ✓ | Commercial Use
- ✓ | Free Cultural Works
- ✓ | Meets Open Definition