



Mini Filament Spool Swatches Box - Remix

JF Joseph Fisher

[VIEW IN BROWSER](#)

updated 1. 7. 2023 | published 1. 7. 2023

Summary

Remix of Samael_'s design with an integrated tray, one less column of swatches, and 3d printed pins.

[3D Printers](#) > [Accessories](#)

Tags: [swatchcase](#) [filamentsamplebox](#) [materialswatch](#)
[filamentswatchbox](#) [filamentswatch](#) [filamentsample](#)

I really liked Samael_'s model, but I needed it slightly smaller so I remixed it so it would hold 24 samples. I also didn't like the way the insert fit into the box so I modified it so they are a single piece.

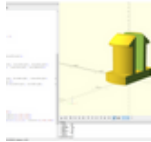
To save money and a trip to the store, I 3D printed pins and they have held up well so far. Since I'm just using this to hold filament samples I'm not worried about the strength of the pins. If they do break, they print really fast and can always be replaced by screws later. I used Souzoumaker's openSCAD pin model and made some modifications to produce a pin with one flat side, and only a partial cut down the centerline.

Shameless self promotion

I also remixed the spools so they would have a hold in the center.

<https://www.printables.com/model/399863-mini-filament-spool-swatches-with-holes>

This remix is based on



Pin

by Souzoumaker



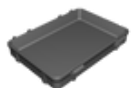
Mini Filament Spool Swatches Box

by Samael_

Model files



box_base.3mf



box-_lid.3mf



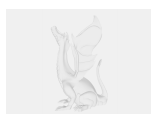
box_latch.3mf

☐ Pin holes expanded to 3.4mm to fit 3D printed hinge pins



hinge_pin_v3.3mf

☐ Print laying down with the flat face on the build plate



pin_maker.scad

License

This work is licensed under a
Creative Commons (4.0 International License)



Attribution—Noncommercial—Share Alike

- ✗ | Sharing without ATTRIBUTION
- ✓ | Remix Culture allowed
- ✗ | Commercial Use
- ✗ | Free Cultural Works
- ✗ | Meets Open Definition