

Prusa i3 Mk3/s x2 C270 Camera bracket.

E Evan Quinn

[VIEW IN BROWSER](#)

updated 19. 8. 2019 | published 19. 8. 2019

Summary

I have printed off half a dozen mounts for c270's for the Mk3 and none of them really did what I wanted so here is my...

[3D Printers](#) > [3D Printers - Upgrades](#)

Tags: [prusa](#) [mk3](#) [mk3s](#)

I have printed off half a dozen mounts for c270's for the Mk3 and none of them really did what I wanted so here is my take on it. Screws used are just the spares that come with the printer.

I liked how strong this mount felt: <https://www.thingiverse.com/thing:2818559> and wanted to give due credit for taking that structure with this duel mount.

The Camera's will need to be opened and manually focused.

I wanted to have two cameras for bed and nozzle views for my octoprint & octopod/openvpn solution.

Instructions on how I configured my Octoprint to have two C270 Camera's working at the same time :) wanted to record it so I didn't have to re-create the wheel.

Instructions work as of 1/9/2019: OctoPrint 1.3.10 running on OctoPi 0.15.1
(used it also on previous builds of octoprint)

https://docs.google.com/document/d/1XS7asAyadv5y2idik_kWNoZeR1Eu21gPFrXriCfQPp0/edit?usp=sharing

Print instructions

Printer Brand:

Prusa

Printer:

i3 MK3

Rafts:

No

Supports:

Yes

Resolution:

.2

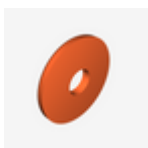
Infill:

10%

Model files



body.stl



washer.stl



bracket.stl

License ©

This work is licensed under a
Creative Commons (International License)



Public Domain

- ✓ | Sharing without ATTRIBUTION
- ✓ | Remix Culture allowed
- ✓ | Commercial Use
- ✓ | Free Cultural Works
- ✓ | Meets Open Definition