

Canine/dog cage/ crate Maru #1 for Kia Niro 2017

 **tiblu**

[VIEW IN BROWSER](#)

updated 2. 7. 2023 | published 2. 7. 2023

Summary

Canine/dog cage/crate Maru #1 for Kia Niro 2017.

[Household](#) > [Pets](#)

Tags: [cage](#) [canine](#) [automotive](#) [kianiro](#)

Canine/dog cage/crate Maru #1 for Kia Niro 2017

Takes 2/3 of the passenger (LHD) side of the trunk leaving 1/3 of the trunk for goods.

Does not have bars on the back side to enable emergency exit in case the trunk does not open. Also has no bars on passenger side (LHD) for extra space and access to corner to place water bucket.

Fusion 360 public link - <https://a360.co/2XqpDle>

Original product welded from 30x30x2 aluminium square tubing and 16x1.5 round bar.

Designed for personal use.

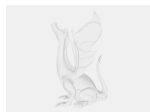
NOTES:

- Drawing does not contain hinges, any hinge can be used.

- Drawing does not contain door shocks which hold the door up when open.
- Drawing does not contain the fastening mechanism. See pictures for an idea how it works. A thumbscrew on the top locking to factory anchor point behind the seat.

All questions and feedback welcome!
All modifications back to the community!

Model files



canine_cage_-_maru_1_-_kia_niro_2017_v63.f3d



canine_cage_-_maru_1_-_kia_niro_2017_v63.obj

[Find source .stl files on Thingiverse.com](#)

License ©

This work is licensed under a
Creative Commons (4.0 International License)



Attribution—Noncommercial—Share Alike

-
- ✗ | Sharing without ATTRIBUTION
 - ✓ | Remix Culture allowed
 - ✗ | Commercial Use
 - ✗ | Free Cultural Works
 - ✗ | Meets Open Definition