

Sovol SV06 Plus ERCF Mount - 6 Filament Version

T Tyler

[VIEW IN BROWSER](#)

updated 13. 8. 2023 | published 13. 8. 2023

Summary

I used the stock filament spool holder location for this to mount to the frame.

[3D Printers](#) > [3D Printers - Upgrades](#)

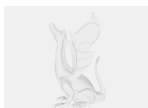
Tags: [sovol](#) [ercf](#) [sv06](#) [sovolsv06](#) [sv06plus](#) [sovolsv06plus](#)

I adapted an ercf into my klipper SV06 Plus. This is for the 6 filament version. I used heatserts(m3) in the holes to mount using m3x8mm bolts. Print as shown in the picture. No supports needed.

Model files



[ercf-sv06-mount.stl](#)



[ercf-sv06-mount-v9.f3d](#)

License ©

This work is licensed under a
Creative Commons (4.0 International License)



Attribution—Noncommercial—No Derivatives

- ✗ | Sharing without ATTRIBUTION
- ✗ | Remix Culture allowed
- ✗ | Commercial Use
- ✗ | Free Cultural Works
- ✗ | Meets Open Definition