

Axle block for superflux X XR rails or VESC



Vareck

[VIEW IN BROWSER](#)

updated 2. 7. 2023 | published 2. 7. 2023

Summary

OK I made this for the xr rails, does it fit, i tried and it fits, now am i 100% sure? nope made it with 3 heights 1/2 r

[Hobby & Makers](#) > [Mechanical Parts](#)

Tags: [vesc](#) [onewheel](#) [superflux](#)

OK

I made this for the xr rails, does it fit, i tried and it fits, now am i 100% sure? nope

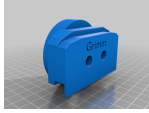
made it with 3 heights

1/2 raise // Stock // 1/2 lower

remix the original if needed.

good luck!

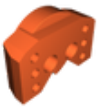
This remix is based on



Onewheel GT Axle Blocks for SuperFlux/XR/Pint Compatible

by GRIMMx50

Model files



sfxr.3mf



sfxr-v7.stl



sfxr-v7.step

License

This work is licensed under a
[Creative Commons \(4.0 International License\)](#)



Attribution-ShareAlike

- ✗ | Sharing without ATTRIBUTION
- ✓ | Remix Culture allowed
- ✓ | Commercial Use
- ✓ | Free Cultural Works
- ✓ | Meets Open Definition