

## Voron SlideSwipe Probe Servo Arm and Rail Mount Top Remix for Tower Pro MG-90s Servos



cncplasticfactory

[VIEW IN BROWSER](#)

updated 2. 7. 2023 | published 2. 7. 2023

### Summary

Remixed servo arm and rail mount top for the SlideSwipe probe for v0.x printers to better suit MG-90s "Tower Pro" servos

[3D Printers](#) > [3D Printers - Upgrades](#)

Tags: [slideswipe](#) [probe](#) [voron](#) [voronv02](#) [voronv0](#)  
[voronv01](#) [towerpro](#) [servoarm](#) [servo](#)

This is a remix of the servo probe arm (Arm1.stl) and rail mount top (RailMountTop.stl) parts for the SlideSwipe probe for Voron v0.x printers by chestwood96.

I bought a [pack of five MG-90s servos from Amazon](#), which came with stickers claiming they were 'Tower Pro' brand.

None of the included servo arms would fit the SlideSwipe Arm1.stl, so I created this remix.

I also found the Tower Pro motor gear sat slightly proud, which meant that properly torquing down the 'rail mount top' piece was not possible - so I

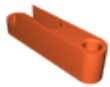
made a remix of RailMountTop.stl that is slightly longer.

## This remix is based on



**GitHub - chestwood96/SlideSwipe**

## Model files



**remixed-servo-arm.stl**



**remixed-rail-mount-top.step**



**remixed-servo-arm.step**



**remixed-rail-mount-top.stl**

## License

This work is licensed under a  
**GNU**

**General Public License v3.0**



**×** | Sharing without **ATTRIBUTION**

- ✓ | Remix Culture allowed
- ✓ | Commercial Use
- ✓ | Meets Open Definition
- i** | Share under the same license