



NC Miata Backup Camera Mount



Khoi Pham

[VIEW IN BROWSER](#)

updated 5. 11. 2023 | published 5. 11. 2023

Summary

This is a backup camera mount for an NC Miata. Two models that support the advanced keyless entry and without.



11.00 hrs



2 pcs



0.20 mm



0.40 mm



PET



75 g



Creality
Ender 3 V2

[Hobby & Makers](#) > [Automotive](#)

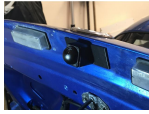
Tags: [cameramount](#) [miata](#) [mx5](#) [ncmiata](#)

This is a backup camera mount for an NC Miata with the Advanced Keyless Entry (AKE) package. It a derivative design originally posted by "kiddingme". It is designed around the Nakita backup camera and moment buttons available on Amazon.

It improves on the original by being simpler to assemble and install. It also just clips on rather than having a base plate that sandwiches the truck sheet metal.

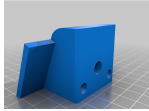
There are two versions, one with the AKE trunk release button and one without. You'll need to download the appropriate version for your car. More info here:

This remix is based on



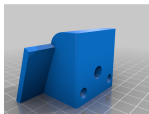
Mazda MX-5 Miata MK3 NC - Boot trim and reversing camera mount

by [ianhampton](#)



NC Miata back up camera mount

by [kiddingme](#)



NC Miata back up camera mount

by [kiddingme](#)



Mazda MX-5 Miata MK3 NC - Boot trim and reversing camera mount

by [ianhampton](#)

Model files



nc_camera_no_ake.stl



nc_camera_ake.stl



nc_camera_no_ake_backing.stl



nc_camera_ake_backing.stl

Print files



nc_camera_no_ake.gcode

⚙ PET ⚙ 0.40 mm ⚙ 0.20 mm ⌚ 5.00 hrs ⚖ 36 g

📄 Creality Slicer



nc_camera_ake.gcode

⚙ PET ⚙ 0.40 mm ⚙ 0.20 mm ⌚ 6.00 hrs ⚖ 39 g

📄 Creality Slicer

License ©



This work is licensed under a
[Creative Commons \(4.0 International License\)](#)

Attribution—Noncommercial—Share Alike

- ✖ | Sharing without ATTRIBUTION
- ✓ | Remix Culture allowed
- ✖ | Commercial Use
- ✖ | Free Cultural Works
- ✖ | Meets Open Definition