

## Voron SlideSwipe Probe Remixed Mount



cncplasticfactory

[VIEW IN BROWSER](#)

updated 2. 7. 2023 | published 2. 7. 2023

### Summary

A remixed mount for the SlideSwipe probe for Voron v0.x printers to use an M3 nut (or drop-in nut) in the extrusion.

[3D Printers](#) > [3D Printers - Upgrades](#)

Tags: [voron](#) [voronv02](#) [voronv0](#) [slideswipe](#) [probe](#)  
[voronv01](#)

This is a remix of the frame mount (RailMountSide.stl) for the SlideSwipe probe for Voron v0.x printers by chestwood96.

The original uses a snap-in approach to hold the SlideSwipe mount on the 1515 extrusion.

This remix uses two M3 nuts (or two drop-in M3 t-nuts) in the 1515 extrusion for a more rigid mount.

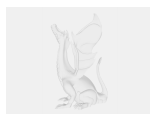
I also made some minor changes to the mount to increase the tolerances to allow a wider range of MG-90s style motors to be used.

### This remix is based on

## Model files



remixed\_rail\_mount\_side.stl



remixed\_rail\_mount\_side.step

## License ©

This work is licensed under a  
**GNU**



**General Public License v3.0**

- 
- ✗ | Sharing without ATTRIBUTION
  - ✓ | Remix Culture allowed
  - ✓ | Commercial Use
  - ✓ | Meets Open Definition
  - i | Share under the same license