

NozzleWiper for Voron v0 / v0.1 / v0.2 Frame Mount Remix



cncplasticfactory

[VIEW IN BROWSER](#)

updated 2. 7. 2023 | published 2. 7. 2023

Summary

A remix of the frame mount for the NozzleWiper for Voron v0.x printers to use an M3 nut (or drop-in T-nut) for rigidity.

[3D Printers](#) > [3D Printers - Upgrades](#)

Tags: [nozzlecleaner](#) [nozzlewiper](#) [voron](#) [voronv02](#)
[nozzlebrush](#) [voronv01](#) [voron0](#) [purgebucket](#)

This is a remix of the frame mount (Frame_Mount.stl) for the NozzleWiper for Voron v0.x printers by chirpy2605.

The original uses a snap-in approach to hold the SlideSwipe mount on the 1515 extrusion.

This remix uses a M3 nut (or a drop-in M3 t-nuts) in the 1515 extrusion for a more rigid mount.

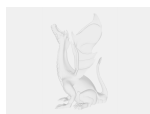
This remix is based on



Model files



remixed_frame_mount.stl



remixed_frame_mount.step

License

This work is licensed under a
GNU



General Public License v3.0

-
- ✗ | Sharing without **ATtribution**
 - ✓ | Remix Culture allowed
 - ✓ | Commercial Use
 - ✓ | Meets Open Definition
 - i | Share under the same license