

Holder PSU for Kingroon KP3S



Yohei Fukuma

[VIEW IN BROWSER](#)

updated 2. 7. 2023 | published 2. 7. 2023

Summary

We've designed a holder to fix PSU of Kingroon KP3S to the rear of the 2040 aluminum frame and share it. I heard that...

[3D Printers](#) > [3D Printers - Upgrades](#)

Tags: [kingroon](#) [kp3s](#) [kingroonkp3s](#) [thingiverse](#)

We've designed a holder to fix PSU of Kingroon KP3S to the rear of the 2040 aluminum frame and share it.

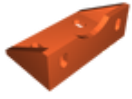
I heard that the strength of the parts may not be obtained depending on the environment, so I uploaded additional strengthened ones.(2021.12.23)

Kingroon KP3S 2040

(2021.12.13)

cf. Imported from the following on 2023.07.02.
<https://www.thingiverse.com/fukumay/designs>

Model files



holder_psu_kp3s_01.stl



asm_psu_kp3s.stp



holder_psu_kp3s_02.stl

[Find source .stl files on Thingiverse.com](#)

License



This work is licensed under a
[Creative Commons \(4.0 International License\)](#)

Attribution—Noncommercial—Share Alike

-
- ✗ | Sharing without ATTRIBUTION
 - ✓ | Remix Culture allowed
 - ✗ | Commercial Use
 - ✗ | Free Cultural Works
 - ✗ | Meets Open Definition