



Ricoh GR Lens Ring



JTDesign

[VIEW IN BROWSER](#)

updated 24. 9. 2023 | published 24. 9. 2023

Summary

Lens ring for the first digital Ricoh GR camera

[Gadgets](#) > [Photo & Video](#)

Tags: [camera](#) [ricoh](#)

Lens ring for the first digital Ricoh GR camera. It is not identical to OEM. Quite frankly the OEM lens ring is a cluster f* on the inner side for no other reason then to block aftermarket parts being made.

I printed this once and had to physically cut away one section for it to fit. I've since modified the model to the physical changes that I've made. If it still doesn't fit for you, let me know and I can change it.

I strongly recommend PETG. Don't scale it up/down. Seams at the "bottom" (see screenshot). It is only mounted in one way with the "bottom" at the bottom left of the lens.

If you insist PLA and it ends up breaking, I would recommend you thicken the ring. Not much you can do about the strengthening the "threads" on the inside.

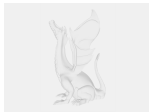
edit: added a ribbed version

edit2: added RB that closes up the gap at the top, the tradeoff is that the max overhang angle is 34.5 degrees. PETG with good cooling shouldn't experience any problems. I kept the original files for people who want a less challenging print.

Model files



ricoh-gr-lens-ring-jt-smooth.step



ricoh-gr-lens-ring-jt-ribbed.step



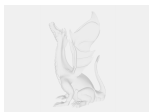
ricoh-gr-lens-ring-jt-smooth.stl



ricoh-gr-lens-ring-jt-ribbed.stl



ricoh-gr-lens-ring-jt-rb-ribbed-345-overhang.step



ricoh-gr-lens-ring-jt-rb-smooth-345-overhang.step

License ©

This work is licensed under a
[Creative Commons \(4.0 International License\)](https://creativecommons.org/licenses/by-nc/4.0/)

Attribution-NonCommercial



- ✗ | Sharing without ATTRIBUTION
- ✓ | Remix Culture allowed
- ✗ | Commercial Use
- ✗ | Free Cultural Works
- ✗ | Meets Open Definition