

## LAY-Z-SPA Inlet Nozzle Side Jet diverter



rac2030

[VIEW IN BROWSER](#)

updated 2. 7. 2023 | published 2. 7. 2023

### Summary

Inlet Nozzle for Lay-z-spa connector (post 2019) that diverts the water flow to the side.



4.76 hrs



1 pcs



0.10 mm



0.40 mm



PET



29 g



Prusa MINI /  
MINI+

[Household](#) > [Outdoor & Garden](#)

Tags: [bestway](#) [whirlpool](#)

Inlet Nozzle for LAY-Z-SPA connector (post 2019) that diverts the water flow to the side.

This is just a re-upload of the original creation of [CoquetTech](#) which I found on [thangs.com](#) and want to use as a base for Remixes but it is not my design work.

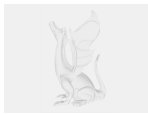
I am using it on a [Aufblasbarer Whirlpool Bestway® LAY-Z-SPA® LED-Whirlpool Hollywood AirJet™](#) that I buyer in Hornbach and it is the 2022 model.

# This remix is based on



**Lay Z Spa Jet.stl - 3D model by CoquetTech on Thangs**  
by CoquetTech

## Model files



**spa-jet\_coquettech.stl**

Original STL from CoquetTech



**spa-jet\_coquettech.3mf**

PrusaSlicer file with PETG Settings that worked for me

## Print files



**spa-jet\_coquettech\_01mm\_petg\_mini\_4h45m.gcode**

PET 0.40 mm 0.10 mm 4.76 hrs 29 g Prusa MINI / MINI+

Generic Transparent China PETG

## License ©

This work is licensed under a  
[Creative Commons \(4.0 International License\)](#)



### Attribution

- ✗ | Sharing without ATTRIBUTION
- ✓ | Remix Culture allowed
- ✓ | Commercial Use
- ✓ | Free Cultural Works

✓ | Meets Open Definition