



# MIDI2Neopixel - Piano LED Visualizer



Stanley

[VIEW IN BROWSER](#)

updated 12. 4. 2022 | published 12. 1. 2021

## Summary

This is simple Piano LED Visualizer which lights LEDs based on MIDI signal.

[Hobby & Makers](#) > [Music](#)

Tags: [visualiser](#) [led](#) [ws2812b](#) [piano](#)

This is simple Piano LED Visualizer which lights LEDs based on MIDI signal.

More info about hardware is here: <https://github.com/stanoba/MIDI2Neopixel>

## Print instructions

**Rafts:** No

**Resolution:** 0.2

**Infill:** 100%

**Filament:** Prusament PLA

# Model files



**midi2neopixel\_case\_top.scad**



**midi2neopixel\_case\_button.stl**



**midi2neopixel\_case\_top.stl**



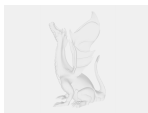
**midi2neopixel\_pcb.stl**



**midi2neopixel\_case\_bottom.stl**



**midi2neopixel\_case\_bottom.scad**



**midi2neopixel\_case\_button.scad**

[Find source .stl files on Thingiverse.com](#)

## License ©

This work is licensed under a  
**Creative Commons (4.0 International License)**



**Attribution**

- ✘ | Sharing without ATTRIBUTION
- ✓ | Remix Culture allowed
- ✓ | Commercial Use
- ✓ | Free Cultural Works
- ✓ | Meets Open Definition